

**Brighter  
Futures for  
Children**



# Admissions to Infant, Junior & Primary School

September 2025 - 2026

---

Guide for Parents and Carers - Starting School

# Contents

Introduction .....	4
Explanation of terms.....	5
Timetable .....	10
Applying for a reception place at a primary/infant school.....	11
Transferring from an infant school to a junior school .....	12
What you need to consider before submitting an application. ....	13
How can I find out more about a school?.....	13
Where can I get help with my application? .....	15
How to apply.....	16
Apply online .....	16
Oversubscription criteria .....	19
Strong medical or social grounds .....	19
Early Years Pupil Premium (EYPP), Pupil Premium and Service priority .....	19
Religious reasons .....	20
Address information .....	21
How the application will be considered .....	26
How the offers are decided .....	26
The Equal Preference System .....	26
Applications received after the deadline.....	28
Change of Preference .....	28
Waiting List .....	28
School appeals .....	30
Questions & answers .....	33
In-year admissions .....	39
School transport .....	40
Financial assistance, charging and general information .....	41
Special educational needs and disabilities .....	42
Allocations 2024 .....	45
Past allocations 2023 .....	47
Map of Reading infant, junior and primary schools .....	49
List of infant, junior, primary schools in the Reading borough .....	50
Infant & Primary Schools .....	50
Junior schools.....	56
School maps.....	57

Central and East Reading Primary Schools .....	57
North Reading Primary Schools .....	58
South Reading Primary Schools .....	59
West Reading Primary Schools .....	60
Academies.....	61
VA Schools.....	62
Community school’s admissions policies.....	63
Academies’ admission policies .....	65
Battle Primary Academy .....	65
Churchend Primary Academy .....	67
Civitas Academy .....	68
Green Park Village Primary Academy .....	69
Meadow Park Academy .....	70
New Christ Church, Church of England Primary .....	71
New Town Primary School.....	72
Ranikhet Academy .....	73
St John’s Church of England Primary School .....	74
St Mary & All Saints CE Academy.....	76
The Heights .....	77
The Palmer Academy .....	78
Voluntary-aided schools’ admissions policies .....	79
All Saints CE Infant .....	79
Christ The King RC Primary .....	80
English Martyrs RC Primary .....	81
St Anne’s RC Primary .....	82
St Martin’s RC Primary.....	83
Junior schools’ admissions policies.....	84
All Saints Junior School .....	84
Geoffrey Field Junior School .....	85
Useful numbers and contact details.....	86
Other Local Authorities.....	86
Other Useful Telephone Numbers.....	86
Useful Websites .....	87

## Introduction

Dear Parent/Carer,

We are Brighter Futures for Children and we took over the delivery of children's services from Reading Borough Council in December 2018

We are wholly-owned by Reading Borough Council but independent of it, with our own staff, management team and board. On behalf of the council, we deliver children's social care (including fostering and early help), education, special educational needs and disabilities (SEND) and youth justice services.

Our vision and aim are to unlock resources to help every child have a happy, healthy and successful life.

Part of our education remit is to deliver the school admissions service, in line with local authority statutory duties. Starting primary school is an exciting time for children and their parents/carers. But it can also be a time of worry and concern.

Deciding on a school is probably one of the most important decisions a parent or carer has to make, and we know this can be a new and daunting experience for many people.

This guide is designed to help you through the process and to make applying for a school place as smooth and straightforward as possible.

It contains a lot of detail, and it is important that you read it carefully and follow the guidance step-by-step to ensure you maximise your chances of reaching a successful outcome for you and your child.

Throughout this guide you will see references to both Brighter Futures for Children and Reading Borough Council, as well as both 'Children Looked After' and 'Looked After Children'. We use the former term and are encouraging others to do so, as we've asked our children in care and it's a term they prefer. However, this guide will refer to both. The information is correct, and this guide gives you a flavour of the full range of opportunities our wonderful schools offer.

If you need further help with your application, please contact the School Admissions Team at:



**School Admissions Team, Brighter Futures for Children,  
Civic Offices, Bridge Street, Reading, RG1 2LU**



**[admissions@brighterfuturesforchildren.org](mailto:admissions@brighterfuturesforchildren.org)**



**0118 937 3777**

## Explanation of terms

Some of the terms, abbreviations, and legal extracts we are required to use in this guide may be difficult to understand and we hope these explanations will help. However, if you are unsure about anything, please telephone the School Admissions Team.

### Admission Authority

The admission authority of a school determines the admission policy for the school. The admission authority for community primary schools is the local authority and the admission authority of a voluntary-aided school or academy is the governing body of the individual school. There are no community secondary schools in Reading.

### Published Admission Number (PAN)

Every school has a Published Admission Number (PAN). The PAN is normally based on the number of classrooms and specialist teaching rooms (i.e. the physical capacity). The PAN represents the maximum number of places available in the year group which pupils normally enter on joining the school. Places must be offered up to this number. The admission number for each school is given in the information on schools later in this guide.

### Categories of schools

State schools are governed in different ways depending on the type of school. The category of the school determines the admission authority. Although the admission authority may be the governing body, applications for admission into Reception/Junior (Year 3) at these schools must be made to the child's home local authority and the home local authority will make the offers of places at these schools.

### Academy

Academies are publicly funded schools which operate outside of local authority control. The government describes them as independent state-funded schools. Essentially, academies have more freedom than other state schools over their finances, the curriculum, and teachers' pay and conditions. A key difference is that they are funded directly by central government, instead of receiving their funds via a local authority.

### Community schools

These schools are maintained by the local authority (LA). The LA is the admission authority, and it is responsible for determining the admission arrangements and allocating school places.

### Primary schools

These schools cover the Reception to Year 6 age groups.

### Infant schools

These schools cover the Reception to Year 2 age groups.



## Junior schools

These schools cover the Year 3 to Year 6 age groups.

## Voluntary-Aided (VA) schools

Management responsibility is shared with the LA but the church or governing body play a greater role. The governing body is the admission authority and agrees the admission policy which will normally be different from those used by the LA.

## Independent schools

Reading has several Independent and Preparatory Schools. These are not administered by Reading Borough Council School Admissions. If you would like your child to attend one of these schools, you must apply directly to the school.

## Application form (CAF)

Also known as the Common Application Form (CAF). Parents/carers must apply for a Reception/Junior place to their home local authority. Reading Borough Council residents must apply to Reading either online at <https://brighterfuturesforchildren.org/for-parents-carers/schools/admissions/> or on the Reading application form.

## Normal admission round

This is when children start school at the earliest entry point for that school. Normal admissions rounds are, as follows:

- Entry to primary or infant schools in Reception Class
- Entry to junior schools in Year 3
- Entry to secondary schools in Year 7
- Entry to Year 10 for studio schools and university technical colleges (Year 9 for the Atrium School) and for those FE College and sixth forms with provision for students aged 14-16
- Year 12 for schools with a sixth form.

## In-Year admissions

An In-Year admission is when you apply to a school outside the normal admissions round and at a time when your child should already be attending school. You would normally be making an In-Year application if you have recently moved, you have arrived from another country or you want to transfer your child to another school.

## Department for Education (DfE)

This is the central government department responsible for children's services and education, including early years, schools, higher and further education policy, apprenticeships, and wider skills in England. The DfE publishes the School Admissions Code, a legal framework that all local authorities and schools must follow for school admissions. Brighter Futures for Children manages Reading Borough Council's coordinated admission scheme, and the admission policies of our schools comply with the legal requirements of this code. The latest version of the School Admissions Code can be obtained from the DfE website ([www.education.gov.uk](http://www.education.gov.uk)).

## Designated Area/Catchment Area

Catchment area (sometimes known as 'designated area') is a geographical area within which children are given priority for admission to a school. It is often used as part of the oversubscription criteria for a school, e.g. where there are more applications than places available, children living in the catchment area will be given priority. Living in the catchment does not guarantee admission to that school.

The maps on pages 57-62 show the catchment areas of schools in the borough. Some voluntary-aided schools may use parish (or other) boundaries to prioritise admissions. Information about catchment areas for schools in other local authorities may be obtained from the authority in question.

## Foundation stage

The period of education from age three to five is known as the Foundation Stage. During the Foundation Stage children may be in a range of different educational settings, including nursery schools, schools, private nurseries, pre-schools, playgroups, independent schools, and some accredited childminders. The Foundation Stage finishes at the end of the reception year.

## Home address

The definition of the child's home address can vary depending on the policy of the admission authority. You will need to check this for your preferred schools.

## Local authority (LA)

The local authority (LA) is responsible for the maintained schools in its area. Your home LA is the LA in which you live and pay council tax. This may be different from the LA in which your child attends school. Reading Borough Council (RBC) is the local authority for Reading.

## Children Looked After (CLA)

These are children in the care of a local authority (in our case, BfC); or provided with accommodation by an LA or in an arrangement supported by an LA. We shorten this to CLA, as our children prefer this, but in current legislation and in some school policies, they are referred to as looked after children (LAC).

## Medical/social

It is important that you check whether the admission authority of your preferred school(s) uses this category as part of the oversubscription criteria for admission. It is not used by all admission authorities and, where used, is given different levels of priority. If you believe your application meets the criteria, you must check how the admission authority of your preferred school will consider your application and what evidence you must supply. It is not enough to simply tick the medical/ social boxes online (or on the paper form). In such cases, the School Admissions Team will not contact the parent/carer to request supporting evidence and the application will not be considered under this category.

Supporting evidence must be provided by you at the time of application to be considered as part of the main allocation.

## National Curriculum Tests

These are national performance tests set by the Qualifications and Curriculum Authority (QCA). At the end of Key Stages 1 and 2, children take statutory Standard Assessment Tests (SATs). The results of these tests are published in the school's prospectus or may be obtained from [www.gov.uk/school-performance-tables](http://www.gov.uk/school-performance-tables)

## National Curriculum

The current National Curriculum provides a broad and balanced education for all children. It is divided into four Key Stages, according to age.

It includes statutory assessments, consisting of tests and teacher assessments, at the end of Key Stage 2 and teacher assessments at the end of Key Stages 1 and 3. The key stages in secondary school are:

Reception	Foundation	4-5 years
Year 1	Key Stage 1 (infants)	5-6 years
Year 2		6-7 years
Year 3	Key Stage 2 (juniors)	7-8 years
Year 4		8-9 years
Year 5		9-10 years
Year 6		10-11 years

## NOR

Stands for "number on roll" and means number of children attending a school.

## Ofsted

This is the abbreviated name of the Office for Standards in Education, which is the government department responsible for inspecting and producing inspection reports on schools. Ofsted reports are available from schools or from [www.ofsted.gov.uk](http://www.ofsted.gov.uk).

## Oversubscribed schools

This is where there are more applicants than places available at a school.

## Oversubscription criteria

These criteria decide which children will be given priority where a school receives more applications than the number of places available (see published admission number). The oversubscription criteria for each Reading school are given in the information on the schools.

## Parent

Any person having parental responsibility for a child (as defined in the Children Act 1989) or who has care of a child, including an LA. Section 576 of the Education Act 1996 defines 'parent' as all natural parents, whether they are married or not; any person who, although not a natural parent, has parental responsibility for a child or young person; any person who, although not a natural parent, has care of a child or young person (having care of a child or young person means that a person with whom the child lives and who looks after the child, irrespective of what their relationship is with the child, is considered to be a parent in education law).



## SEND

SEND stands for special educational need and disability.

## Sibling

The definition of a sibling may vary but, unless otherwise stated by the admission authority, the following will be used in most cases:

A brother/sister, half-brother/half-sister, adopted brother/sister, step-brother/sister or the child of the parent's/carer's partner. In every case, the child should be living in the same family unit at the same address. In most cases, for admissions purposes, only siblings still attending the preferred school in September 2025 will qualify. You should check the definition of a sibling in the policy of your preferred school(s).

A child who is part of a multiple birth (e.g. twins) is not classed as a sibling for the purpose of ranking by oversubscription criteria. However, where application of the oversubscription criteria would result in splitting children from a multiple birth, the other child/children will usually be admitted to the school.

## Straight-line distance – Tiebreaker

An admission authority may use radial (or straight-line) distance from the home to school as part of the oversubscription criteria. In most cases this is used to rank applications where there are more applicants than places available within a category of the oversubscription criteria. This is called the tiebreaker. In Reading, all schools measure the straight-line distance from the home to the school using the Ordnance Survey data points of the home and the school using computerised software of Reading Borough Council. Every address has a unique data point which is determined by the Easting and Northing. This point can be anywhere on the property. The distance created is given in miles to three decimal points. Admission authorities in other local authorities may use a different method for calculating the distance from the school.

## Supplementary forms (SIF)

Some schools consider extra information not captured on the CAF to help them rank applications according to their oversubscription criteria. Therefore, you may also wish to complete a supplementary form if you are seeking a place at a voluntary-aided school. These forms are available direct from the school or via the local authority admissions team. Supplementary forms can be downloaded from <https://brighterfuturesforchildren.org/for-parents-carers/schools/admissions/>. **Please note that supplementary forms should be returned to the relevant school(s).**

## Pupil Premium/Supplementary forms

Some schools - such as community primary schools - give priority within a category to children who are in receipt of the Early Years Pupil Premium (EYPP) at the time of application. To be considered for this priority, parents/carers will be required to complete a Supplementary Information Form which must be endorsed by the child's current school or nursery confirming that they receive pupil premium for the child.

## Timetable

<b>ACTION</b>	<b>DATE</b>
Guide for Parents & Carers to be placed on Brighter Futures for Children website	By 2 September 2024
Online primary and junior admissions site open	1 November 2024
National closing date for receipt of applications	15 January 2025
Deadline for providing evidence to meet admissions criteria (please see individual school pages to see which schools requires additional information)	15 January 2025
Deadline for late applications, changes of preference and changes of address to be accepted with good reason (evidence of reason must be submitted)	1 February 2025
National Offer Day - offer letters posted second class to Reading residents who applied via a paper application	16 April 2025
Online applicants may view outcome of their application	16 April 2025
Deadline for parents to accept place offered	1 May 2025
Closing date for submitting an appeal, to be heard on time	15 May 2025
Late applications for oversubscribed schools added to waiting lists and changes of preferences processed.	7 May 2025 * subject to change
Appeals to be heard if submitted by the deadline	June to July 2025
Coordination with other LAs ends	31 August 2025
Waiting lists held for Reading Borough schools	Until at least 31 July 2026

## Applying for a reception place at a primary/infant school

Brighter Futures for Children delivers the schools admissions service on behalf of Reading Borough Council.

If your child was born between 1 September 2020 and 31 August 2021, you should apply for a place at an infant or primary school.

Most children start school before they reach the age of five and are known as ‘Rising 5s’ in the reception year of primary school. However, legally your child does not have to start school until the beginning of the term following their fifth birthday. This is called ‘compulsory’ school age and is the point at which they must attend school on a full-time basis.

For those children born between the 1 September 2020 and 31 August 2021, the table below shows when a child reaches compulsory (or statutory) school age and should be receiving full-time education.

Children born between	Statutory school age
01/09/2020 – 31/12/2020	January 2026
01/01/2021 – 31/03/2021	April 2026
01/04/2021 – 31/08/2021	September 2026

You may decide to start your child in school full-time from September 2025. Alternatively, depending on your child’s date of birth, you may reserve the place offered and defer their start until January or April 2026. If you decide to defer, you must advise your child’s allocated school of your intention when you are offered a place.

It is not possible to hold the offer of a place into the following school year. If your child reaches compulsory school age before September 2026, they must take up their place by April 2026. If you choose to defer your child’s start until September 2026, they will miss reception year and you will be required to make a new application for their place in Year 1 (assuming places are available).

In some circumstances summer born (01.04.2021 - 31.08.2021) children may be admitted to a reception class in September 2026. This is called “offsetting”. A formal application must be submitted in order to request an offset. The form can be downloaded from the primary page <https://brighterfuturesforchildren.org/for-parents-carers/schools/primary-admissions/> or you can email the admissions team for a copy.

## Transferring from an infant school to a junior school

This guide is designed to help you understand the admissions process and to give information about junior schools in Reading borough. The junior school admission policies can be found later in this guide.

Children normally move from their infant school to the linked junior school. However, if the junior school receives more applications than it has spaces available, the move cannot be guaranteed. If your child is at an infant school (for example, All Saints Infants or Geoffrey Field Infants), you must still apply to join the linked junior school – it is not an automatic transfer.

This guide provides information on the timetable for completed forms and when you will hear from us, together with the facts about how your application will be considered against the oversubscription criteria.

You are required to complete the application form available from your home local authority regardless of the authority in which your preferred junior school is situated. If you live in the borough of Reading but wish to apply for a junior school in another local authority, you must apply to Reading School Admissions Team. We recommend that you read their admission policies to understand how your application will be considered. In some instances, additional forms may need to be completed.

If your child is not offered a place at the preferred junior school, your offer letter will inform you what to do next. Your child will automatically be added to the waiting list for the school. The School Admissions Team will contact you to discuss next steps in finding your child a school place from September 2025. You do not need to list primary schools as preferences, as these are dealt with as in-year admission. If you would like your child to attend a primary school, you will need to complete an in-year application from June 2025.

## What you need to consider before submitting an application

There is a coordinated admissions process in England with exchange of information between local authorities (LA). This means parents/carers must apply through their home LA for any state-maintained primary /junior school in England.

The main points of Reading Borough Council's coordinated scheme are:

- If you live in the borough of Reading, you must apply to Reading School Admissions either online or by completing a paper application form
- You may list up to four preferred schools on your child's application
- You are advised to put more than one preference as you are not guaranteed a place at that school and if we are not able to offer a place, the School Admission Team will allocate a place to your child at the closest school to your home with places available
- Preferences should be ranked with your most preferred school listed first (i.e., preference 1)
- You must include any state school you would like your child to attend, including schools in other local authorities e.g. Oxfordshire, West Berkshire, Wokingham. This includes voluntary-aided schools, foundation schools, free schools and academies
- You may also need a supplementary information form (SIF) for some schools. Failure to submit these forms may result in your child being ranked in a lower category
- You should apply by 15 January 2025
- Applications for schools named by parents/carers are considered by the appropriate admission authority for the school without reference to your preference order
- All parents/carers who have applied for a school place by the closing date will receive an offer of one school place
- The offer of a place by the LA may be on behalf of other admission authorities
- Offer notifications will be distributed, to those who submitted "on time" applications, on National Offer Day
- The place offered must be accepted by the deadline as stated in the timetable at the beginning of this guide
- All schools will run waiting lists until at least the end of July 2026.

## How can I find out more about a school?

The School Admissions Team must remain impartial. It is up to the parent/carer to research their preferred schools before submitting their application form.

You may already have an idea regarding some of the aspects of a school which are important to you or your child. You may have talked to other parents/carers and, although their ideas may be helpful, you should always make your own judgement.

You can visit schools by attending open days/evenings or by appointment with the school. Information about open days/evenings may be obtained from the school.

You can find out information about the school from the school's website, this includes:

- school's aims and objectives
- the curriculum offered
- attainment and achievements of pupils

- attendance figures
- out of school activities and clubs such as breakfast and after school care
- information on policies, such as behaviour and discipline.

You can get information about attainment and assessment results, Ofsted reports and school profiles from [www.get-information-schools.service.gov.uk](http://www.get-information-schools.service.gov.uk).

You should consider the following points and use available information to decide the likelihood of your child securing a place at your preferred school(s)

- How far will your child need to travel and how will they get there? How much will it cost?
- Will you be entitled to any assistance with travelling expenses? See page 40 for details on Reading's transport policy
- Does the school give preference to faith or religious denomination?
- How many pupils are there and how many places are available in the year group?
- Was the school oversubscribed in previous years? There are pages (found later in this guide) giving information on how many applications there have been for each school in Reading and how places have been offered in the past. Other LAs also have this information in their guides for parents and carers. This information is provided only as a guide; admission authorities cannot accurately anticipate demand
- Whether your preferred school is the catchment school for your home address. You can check this using Reading Borough Council's website: [my.reading.gov.uk](http://my.reading.gov.uk).

**Be aware that some addresses do not have a catchment school, this is where a community school has converted to an academy.**

- Although living in the catchment area does not guarantee admission to the school, it is important to consider naming your catchment school as one of your preferences. If you do not, and we are unable to offer one of your preferred schools, your catchment school may be full and you could be offered a place at a school some distance away. Even if you name the school as your lowest preference, your application will be given a priority for admission over other applications because you live in the catchment area.

When you have selected your preferred schools, you must submit an application to the School Admissions Team by 15 January 2025. While you have the right to express a preference for a school, you do not have the right to a place at that school. The admission authority for your preferred school(s) will consider your application and if there are places available, a place will be offered. However, if there are more applications than places available, the admission authority for the school will apply their oversubscription criteria.



## Where can I get help with my application?

If you have any questions about the admission process, you can contact the School Admission Team:

- Telephone: 0118 937 3777
- Email: [admissions@brighterfuturesforchildren.org](mailto:admissions@brighterfuturesforchildren.org)

If you would like impartial advice on any aspect of school admissions, you should contact:

ACE Education - an independent charity that provides free advice to parents on education matters including school admissions.

- General advice line: 0300 0115 142
- Website: [www.ace-ed.org.uk](http://www.ace-ed.org.uk)

If your child has special educational needs or a disability (with or without an education, health and care plan), Reading Information Advice and Support Service for SEND (known as Reading IASS), can offer you free, confidential, and impartial information, advice and support around secondary transfer.

- Telephone: 0118 937 3421
- Email: [iass@brighterfuturesforchildren.org](mailto:iass@brighterfuturesforchildren.org)
- Website: [www.readingiass.org](http://www.readingiass.org)

## How to apply

### Apply online

It is simple and convenient.

- You can apply on most smartphones and tablets.
- You can change your preferences at any time until the closing date of 15 January 2025.
- You will receive an email confirming your application has been submitted.
- You will receive an email on the morning of 16 April 2025 informing you to which school your child has been allocated.
- You can also log in and view your allocation on 16 April 2025.

Reading residents apply online at (*click on the link below*):

<https://brighterfuturesforchildren.org/for-parents-carers/schools/primary-admissions/>

Please apply to the LA where your child lives - only apply to Reading if your child's permanent home is in the borough of Reading.

Admissions to state funded primary schools in England are coordinated across local authority boundaries. This means that, if a child lives in Reading and the parent wants to apply for a place at a school in a different local authority, the parent must apply via Reading School Admissions Team.

Please read carefully through this guide on how to apply. The following information will also help you to apply online or complete the paper application form. Full details of how to apply online are available on Brighter Futures for Children's website.

Paper application forms are available from any Reading Early Years Provider/ primary school or the Civic Offices.

Paper application forms and online applications are treated the same and are not treated on a first come, first served basis.

If you applied using a paper application, your formal offer letter will be posted second class on 16 April, to the home address provided on the application form. Please note this may take two to three days to arrive, so we recommend applying online.



## 1. Child's details

You must provide your child's legal surname as given on their birth certificate (or deed poll in cases where there has been a change of name).

## 2. Home address

Your home address is an important factor in how your application is considered. We will check addresses against council tax data held by Reading Borough Council. The address you give on the form **MUST** be your child's single permanent home. See page 21 for further information. If you give an incorrect address and we offer a school place based on that address, the offer may be withdrawn.

The admission authority reserves the right to obtain additional information to verify addresses.

## 3. Parents/Carers details

Please ensure you complete the section(s) on parents/carers details and remember to provide a daytime telephone number. We recommend that the parent/carer who is listed on the Council Tax record makes the application, as this facilitates with the address verification process.

## 4. Preferences

Selecting your preferred schools and deciding on your preference order is important. You may list up to four schools starting with preference 1: the school you most want your child to attend. Before deciding which schools to list, you are strongly encouraged to read our guide. It may also be possible to visit schools, which we would also recommend.

It is important to understand the admission rules for a particular school to assess the likelihood of being able to obtain a place for your child. If a place is not offered at one of the schools listed on your application, it will be because there were other children who had a higher priority for a place under the school's admission rules. The admission rules for every state-funded school in Reading can be found later in this guide. If you believe your application should be considered under a certain oversubscription category, please be sure to provide the relevant supporting information.

You are not required to name four preferences, however, listing more than one may increase the probability of being offered a preferred school. Please do not list a preferred school more than once. If you list only one preference and the school cannot be offered, the School Admissions Team will allocate a place to your child at the closest school to your home with spaces available.

## 5. Siblings

Children with a sibling who (a) currently attends a preferred school and will continue to attend in September 2025, or (b) attends an infant school or linked junior school in September 2025, are usually considered in a higher admissions category for that school. Please see the school's admission policy for further details.

If your child has a sibling attending a preferred school (as above), you must provide their details (name/date of birth). Failure to declare a sibling in the correct section of the application form will result in your child not being ranked in the appropriate category. Siblings who, in September 2025, attend the nursery attached to a preferred school will not be classed as a sibling for the purposes of oversubscription.

A child who is part of a multiple birth (e.g. twins) is not classed as a sibling for the purpose of ranking by oversubscription criteria. However, where application of the oversubscription criteria would

result in splitting children from a multiple birth, the other child/children will usually be admitted to the school.

## 6. Declaration and signature

Please check all the sections of the application form. If you have completed a paper form, please sign and date the form. If you apply online, you cannot submit your application unless you accept the terms and conditions box.

By signing the paper form or accepting the online terms and conditions, you are declaring that the information given on your application form is correct and that you have read our admissions guide. Where incorrect information is given, the School Admissions Team reserves the right to withdraw an offered place at any stage of the process.

## 7. Returning the application form

If you have chosen to complete the paper application form and your child is currently attending a school in Reading, you may return the form to your child's school. The school will forward the form to the School Admissions Team.

**PLEASE NOTE:** The School Admissions Team aims to acknowledge all on-time paper applications within 15 school days of receipt. However, in busy periods this may not be possible. Please call the team if your application has not been acknowledged after 20 school days. Late applications are not processed until after 3 May. When the late application has been processed you will receive confirmation.

**The closing date for receipt of paper application forms is 15 January 2025.**

**The application portal will close at midnight on 15 January 2025.**

If your child does not attend a Reading school, please return the form to: The School Admissions Team, Brighter Futures for Children, Civic Offices, Bridge Street, Reading, RG1 2LU.

Please remember A4 envelopes are not charged at the normal postage rate. Failure to pay the correct postage charge can delay receipt of your application.

Applications posted on 15 January will not be accepted as "on time". The application MUST be received by the School Admissions Team or your child's Early Years Provider within office hours on 15 January.

The information provided by parents/carers will be kept safely on a database in accordance with the GDPR. This ensures the data provided is used solely for defined purposes.

## Oversubscription criteria

**Please consider whether any of the following apply to your child's application and provide the relevant information/evidence.**

### Strong medical or social grounds

This category only applies to some schools. You will need to check if it applies to your preferred school. Where the category does apply to your preferred school(s), you will need to send in evidence supporting the application. Please note, certain schools require evidence to specifically state why they are the only school that can meet the child/family's needs. If you do not provide evidence as outlined in the school's oversubscription criteria, your application will not be considered by the relevant panel for this category.

You should supply the evidence prior to 1 February 2025 to be considered for this category. Any submission after this date may not be considered on time. Neither the School Admission Team, nor the school will contact a professional to obtain any necessary evidence. Additional information produced late, will be considered late and only affect a child's place on the waiting list.

### Early Years Pupil Premium (EYPP), Pupil Premium and service priority

Some schools (such as community primary schools) give priority within a category to children who are in receipt of the Early Years Pupil Premium (EYPP) at the time of application. To be considered for this priority, parents/carers are required to complete a Supplementary Information Form (which must be endorsed by the child's current school or early years provider) confirming that they receive pupil premium for the child. This form can be downloaded from the Brighter Futures for Children website or obtained from your child's current setting.

These forms must be sent to the School Admissions Team in order for your child to be considered in this category.

### Early Years Pupil Premium

Early Years Pupil Premium (EYPP) is additional funding for early years settings to improve the education they provide for disadvantaged three and four-year-olds.

Three and four-year-olds in state-funded early education will attract EYPP funding if they meet at least one of the following criteria:

Their family receives one of the following:

- Income support
- Income-based Job Seekers Allowance
- Income-related Employment Support Allowance
- Support under part six of the Immigration and Asylum Act 1999
- The guaranteed element of State Pension Credit
- Child Tax Credit (provided they are not also entitled to working tax credit and have an annual gross income of no more than £16,190)

- Working tax credit run on, which is paid for four weeks after they stop qualifying for Working Tax Credit
- Universal Credit (provided you have an annual net earned income of no more than £7,400, as assessed by earnings from up to three of your most recent assessment periods)

You may also get early years pupil premium if your child is currently being looked after by a local authority in England or Wales or if your child has left care in England or Wales through:

- adoption
- special guardianship order
- a child arrangements order

Children must receive free early education in order to attract EYPP funding. They do not have to take up the full 570 hours of early education they are entitled to in order to attract EYPP (see [www.brighterfuturesforchildren.org/for-parents-carers/schools/pupil-premium/](http://www.brighterfuturesforchildren.org/for-parents-carers/schools/pupil-premium/)).

## Pupil Premium

The pupil premium gives schools extra funding to raise the attainment of disadvantaged pupils from Reception to Year 11. Children eligible for pupil premium are:

- those eligible for free school meals at any point in the past six years
- children looked after who have been looked after for one day or more
- adopted
- those who leave care under a special guardianship order or a residence order.

For more information about free school meals please visit:

<https://brighterfuturesforchildren.org/for-parents-carers/schools/school-meals/>

## Service Premium

The service premium gives schools extra funding to support children and young people with parents in the armed forces. Pupils attract the premium if they meet the following criteria:

- one of their parents is serving in the regular armed forces
- one of their parents served in the regular armed forces in the last three years
- one of their parents died while serving in the armed forces and the pupil is in receipt of a pension under the Armed Forces Compensation Scheme (AFCS) and the War Pensions Scheme (WPS).

## Religious reasons

If you have selected a school for religious reasons (for example English Martyrs RC Primary, St Anne's RC Primary, St John's CE Primary or St Martin's RC Primary, you are advised to complete the school's supplementary form (SIF) and return it by the specified date. Please check the relevant school's admissions policy for the date. Failure to submit this form to the school(s) may result in the application being ranked in a lower category.



## Address information

### Home address

The definition of a child's home address may vary from one local authority to another. You should consult the admissions policies of the local authorities in which your preferred schools are located. The following definition is used to establish the home address for most schools in Reading.

### Definition of home address

Applications are processed using the child's single permanent home address, where the child lives with parent(s)/carer(s)/legal guardian(s). The child must live at this address on the closing date for applications and, when submitting their application form, the applicant is confirming the child will reside at the address on National Offer Day.

The application form should be completed using the address (owned, leased, or rented) where the child lives for most of the school week. This is based on the number of school nights a child spends at the home (Sunday at 6pm to Friday at 9am). The applicant should consider whether their name is on the council tax records (or tenancy agreement) for the address. If the applicant's name is not showing on these documents, it may be more difficult to prove their liability at the address.

Reference will be made to council tax records when determining a single address for consideration under the home address criteria of the schools' policies. It is for the applicant to satisfy the local authority that they live at the address stated. An address will not be accepted where the child is resident other than with a parent or carer (unless this was part of a private fostering or formal care arrangement).

### Fraudulent addresses or false information

We have a duty to ensure applications are genuine in all aspects. If your child moves into the home of a friend or relative during the process, or you provide an alternative address as a deliberate device to improve your child's priority for a school place, or other details are provided on the application form which prove to be untrue – this is a misleading application. If it becomes clear a place has been allocated based on false information, we may withdraw the child's offer, even if they have already started at the school.

The School Admissions Team occasionally receives information from members of the public concerning potential misleading or fraudulent applications. Signed statements will be required to support such allegations, together with supporting evidence, in order that they may be investigated. The names of anyone supplying information will be withheld in accordance with the council's whistle-blowing policy (details of which may be found here: <https://www.reading.gov.uk/the-council-and-democracy/council-strategies-plans-and-policies/whistleblowing/>).

### Temporary addresses

Some residential arrangements will be considered temporary. In such cases, the School Admissions Team will examine available evidence to determine whether, on balance, the declared home address may be considered the child's permanent home for the purpose of admission.

In cases where the declared address is rented, yet the applicant has no claim on another property, it may still be considered a temporary address where there is evidence to show the applicant is renting the property solely for the period necessary to secure admission to a school.

A temporary address cannot be used to obtain a school place and will only be considered where evidence is provided showing a genuine reason for the move e.g. homelessness, flooding or subsidence.

### Multiple properties

Checks will be made to determine whether the home address declared is that of a second home (with the main home being elsewhere).

Any circumstance where the declared address is to be accepted as the permanent home, despite another home being owned or otherwise available for occupation, should be declared at the point of application. Without being exhaustive these might include:

- an owned property being a considerable distance from the preferred school, indicating that the family had permanently relocated to the new home; or
- an owned property that is uninhabitable and cannot reasonably be made habitable in the period leading up to admission to the school; or
- an owned property that is in the process of being sold and the family live permanently in the declared property; or
- a family home that, following divorce or separation, cannot be occupied by the applicant, or otherwise treated as the child's permanent home.
- an owned property on a buy to let mortgage which is occupied by tenants.

### Changes of address

If you have submitted an on-time application and relocate on or before 1 February, you must inform us of your change of address. You will need to submit the details to [admissions@brighterfuturesforchildren.org](mailto:admissions@brighterfuturesforchildren.org) along with evidence that your move has taken place. The evidence we require is either proof of "exchange of contracts" or a fully signed tenancy agreement showing your child will reside at the address past their entry into primary/infant or junior school. If you move locally or within 20 miles, we also require evidence that you have disposed of your previous property, i.e. a copy of the end of tenancy arrangements or proof contracts have exchanged.

### Designated/Catchment area.

If you need advice about the designated/catchment area school for your home address you can look at the following website [my.reading.gov.uk](http://my.reading.gov.uk) or you can contact the School Admissions Team.

You are strongly advised to consider naming your catchment area school, if you have one, as one of your preferences regardless of whether there is a history of that school admitting (or not admitting) all children from its catchment area. Places are not reserved for children living in the catchment area of a school. The school must be named as a preference in order that a child may be considered for a place there. Applicants listing a school as a preference, but living outside the school's catchment area, will have priority for admission over those living within the catchment area, but who did not list the school. It is worth noting that not all addresses in Reading have a catchment/ designated area school. For example, where a school becomes an academy, the trust may decide to remove the catchment/designated area from their policy.

## Split living arrangements

Where a family claims to be resident at more than one address, justification and evidence of the family's circumstances will be required (e.g. formal residence order, child arrangements order or legal separation documentation). The application must be completed by the parent using the address which is owned, leased, or rented and where the child lives for the majority of the school week. This is based on the number of school nights a child spends at the address (from Sunday at 6pm to Friday at 9am).

Where children live across two addresses, families cannot use whichever address would advantage their child's admission into a certain school.

Where there is an equal split or there is any doubt about residence, the School Admissions Team will assess and make a judgment about which address to use for the purpose of allocating a school place. Where necessary, further information may be requested, for example:

- any legal documentation confirming residence
- the pattern of residence
- the duration of the current arrangement
- confirmation from the current school of the primary contact details and home address supplied to it by the parents
- the address where child benefit or other benefit (if applicable) is paid
- where the child is registered with their GP
- any other evidence the parents may supply to verify the position.

It is recommended that consensus be reached by both parties (and the child) regarding the school preferences listed. Only one offer letter will be sent to the main applicant, unless otherwise requested (and agreed) by both parties.

The information provided to determine the home address will be considered by an admissions panel of at least two officers and their decision is final.

## Disputes between parents

Anyone with parental responsibility may apply for their child's school place and list up to four preferred school(s). However, the child's address on the application should be recorded as the place they spend most of the week as set out in our definition of 'Home Address'.

When completing application forms, parents/carers must tick to confirm they have parental responsibility for the child and that their application is made with the agreement of all parties having parental responsibility.

Where parents disagree over which school preferences should be named, we recommend starting the following process as early as possible as national closing dates are fixed and cannot be extended under any circumstances.

We urge parents to work together in the best interests of their child. It is advised that the applicant should inform all other parties who have parental responsibility before submitting the application.

All parties should agree with the school preferences to be listed. Any disagreements should be resolved before an application is submitted. If parents are unable to reach an amicable agreement, then both parents should seek their own legal advice or recourse through the Family Court.

You should note that the local authority will only process one application per child and will only make one offer of a school place.

Where more than one application is received with different preferences, the local authority (or local authorities if parents submit applications to more than one) will contact both applicants to advise that more than one application has been received and request they complete one application with one set of preferences for their child.

We will not mediate between parents where there is a dispute or when two applications are submitted. Only one application will be accepted, and the final decision will rest with the local authority after all submitted evidence has been considered.

All evidence must be received by the published closing dates, at which point a decision will be made as to which application will be processed. The local authorities concerned may contact the education settings noted in the application, or other professionals working with the child where applicable, to assist in their decision making. Any evidence provided after the closing date which affects the content or processing of the application, may render the application late, and delay an offer of a school place.

### Applications from abroad (excluding service personnel)

It is the responsibility of parents to check that their children have a right, under their visa entry conditions, to study at a school.

Applicants are reminded that they should (where applicable):

- Check that they have the “right of abode” ([www.gov.uk/right-of-abode](http://www.gov.uk/right-of-abode))
- Ensure the conditions of their immigration status permit them to access a state-funded school.

By making an application, applicants are declaring they have checked their eligibility.

Having the “right of abode” means you are permitted to live or work in the UK without any immigration restrictions, as follows:

- You will not need a visa to come to the UK
- There is no limit on the length of time you can spend in the country.

All British citizens automatically have “right of abode” in the UK. Some Commonwealth citizens may also have “right of abode”.

You can prove you have “right of abode” if you have a UK passport describing you as a British citizen or British subject with right of abode. Otherwise, you need to apply for a ‘certificate of entitlement’.

### Evidence required to accept an application for an overseas child:

- Copy of child’s passport
- Evidence of arrival into the UK
- Flight/ferry/bus ticket confirming child’s name and stating date of arrival
- Immigration stamp or stamped entrance clearance.

## Evidence of 'home' address

- Where the Reading property is owned, a solicitor's letter confirming completion of sale. In cases where the owned property is currently rented out, an 'end of tenancy notice' to the current occupiers should be supplied.
- Council Tax bill – naming applicant.
- Driving licence - naming applicant at address.
- Where the Reading address is rented, a copy of the tenancy agreement showing applicant at the address and dates liable.

If you are moving to a temporary address, we will also accept:

- Hotel/Airbnb accommodation confirmation. This should show dates of stay.
- Letter from applicant's new employer (e.g. university college) where accommodation is being provided by them and is tied to the new post/job.
- Other compelling evidence that you are returning or moving to the area, e.g. signed and dated letter from family/friend confirming names of parent and child will reside at their address.

Additional checks may be made using the Reading Borough Council tax system.

Families of Crown servants, returning from overseas to live in Reading, should also provide an official letter confirming the UK posting and their expected relocation date.

## How the application will be considered

Upon receipt of the above “evidence for accepting an application”, the School Admissions Team will consider any application from an overseas applicant received by the closing date for “on time” applications.

The application will not be processed using a Reading address (i.e. for the purposes of ranking the application against a school’s oversubscription criteria) until evidence is received to show the applicant/child are both residents at the Reading address given. Until this time, the application will be considered without an address and will not be ranked by distance against a school’s oversubscription criteria.

As soon as the applicant/child are resident at the Reading address, they should advise the School Admissions Team accordingly. Upon receipt of the “evidence of home address” (see above), the Reading address will be applied to the child’s application adding distance/catchment data for the purposes of ranking.

## How the offers are decided

Admissions to state-funded secondary schools in England are coordinated across local authority boundaries. This means that, if a child lives in Reading and the parent wants to apply for a place at a school that is in a different local authority, the parent must apply via Reading School Admissions Team. The Reading team will liaise with the English local authority where the school is situated on behalf of the parent and child and will be responsible for sending notification of the outcome on behalf of the school/home local authority on National Offer Day.

### The Equal Preference System

At secondary transfer, admission authorities for all state-funded mainstream schools in England must follow the “Equal Preference System”. This is a requirement of the Department for Education’s School Admission Code 2021. This prevents admission authorities giving higher priority to parents who make a particular school their first preference.

Every school that a parent lists on the application form is treated as a separate application and the highest possible preference will be offered. The admission authority for a school must not discriminate against any application because a parent did not express a first preference for that school on the application. Offering places based on “first preferences first” would be unlawful. Schools are not told whether a parent ranked the school as a first, second, third or fourth preference.

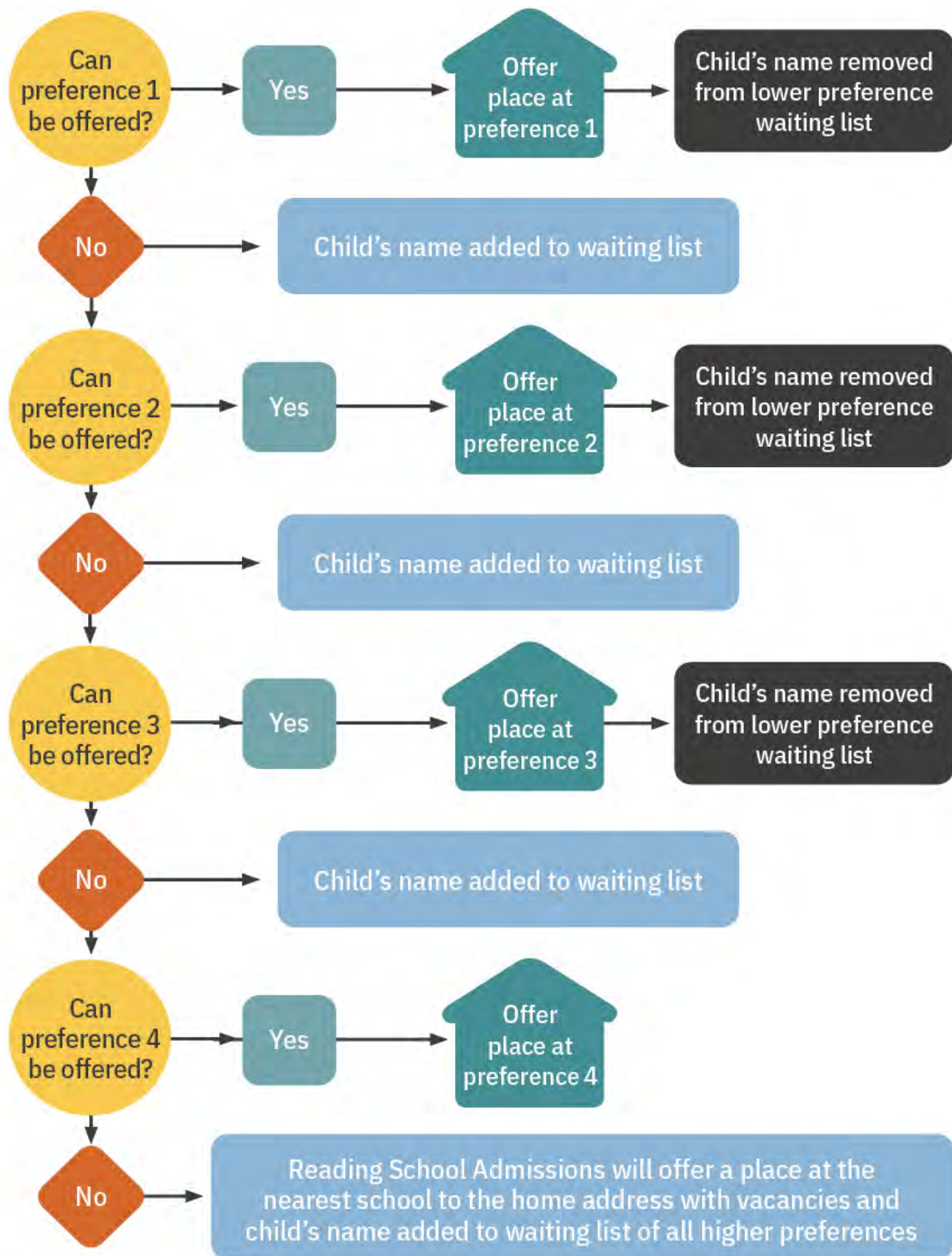
The priority for admission is established using the admission rules for the relevant school. Once this information is available the preferences are then considered by the local authority acting as the “clearing house”. If, at this stage, it was theoretically possible to offer a place at all of the preferred schools listed, the school offered would be the one listed as the highest preference. If a place cannot be offered at any of the schools listed as a preference, the local authority will offer a place at the nearest school with an available place.

The following website gives a very helpful explanation of how the Equal Preference System works in practice: <https://www.elevenplusexams.co.uk/schools/the-equal-preference-system>

Offer notifications, to all Reading residents who made an on-time application, will be sent by the School Admissions Team on National Offer Day.



The flow-chart diagram below shows the process which results in each child being offered a school place:



## Applications received after the deadline

An application received after the closing date for applications (15 January 2025) will be treated as a “late” application and will be considered after all on-time applications have been allocated.

However, applications received late for a good reason will be treated as “on-time” if received before 1 February 2025. Such good reasons might include illness preventing a single parent/carer from returning the form on time or the family moving into Reading after the closing date. **The reason for lateness must be supported with documentary evidence.** If no evidence is provided, the application will be considered as “late” and not processed until after 6 May 2025.

After 16 April and before 31 August 2025 late applications will be considered in line with the published admission criteria. Where possible, a place will be offered at a preferred school. If the preferred school is oversubscribed, the child’s name will be added to the waiting list in accordance with oversubscription criteria.

You will need to check the admission policies of other LAs for information regarding their treatment of late applications.

## Change of Preference

Changes of preference made in writing (and received between 16 January and 1 February 2025) may be accepted as “on-time” providing a good reason is given (e.g. a family moving area or illness preventing a single parent from making an on-time application). In such cases, supporting evidence will be required. Any changes received after 2 February 2025 will be treated as late, regardless of whether supporting evidence is provided, and will be considered after National Offer Day.

An application with new preferences will replace any previous application, therefore it is important to list all the preferred schools (up to a maximum of four) for which your child is to be considered. After National Offer Day, if you do not list a school that you have listed on a previous application, your child will be removed from the waiting list of that school.

## Waiting List

It is not always possible to offer a place at your first preference school or, in some cases, any of your preferred schools. This will be because your preferred school(s) received more applications than there were places available. Where this occurs, each application is ranked according to the school’s oversubscription criteria and places offered accordingly.

For example, a school may have 200 places and receive 300 applications. The applications are ranked (1 to 300) using the school’s oversubscription criteria and the top 200 pupils are offered places. The remaining 100 pupils may then be added to the waiting list.

Your child’s name will automatically be added to the waiting list of any school(s) you list higher in preference to the school your child is offered. This is the case for the waiting lists of any Reading, Oxfordshire, Wokingham or West Berkshire schools listed on your application. You will need to check the policies of other local authorities. Waiting list information will not be made available until after 7 May 2025.

As previously mentioned, waiting lists are always ranked according to the published oversubscription criteria of the relevant school and not by the length of time a child's name has been on a list. As a result, your child's position on a waiting list may change as new applications are added or places are offered.

If you accept the offer of another school place, this will not affect your child's position on any waiting lists. When you receive your school offer, you will be asked to complete an acceptance form. If you applied through the citizen's portal, you will be able to accept your school offer via your portal account until the acceptance deadline. If you submitted a paper application, you should accept your offer using the acceptance link found in your offer letter. When accepting, you will be asked whether you want your child's name to be removed from the waiting list(s) of any higher preference school(s). Your child's name will remain on a waiting list unless you ask for it to be removed.

Lodging an appeal for a place at a preferred school that was not offered to your child will not affect your child's waiting list position.

The School Admissions Team allocate places from the waiting list once a month. When a place becomes available, it will be offered to the child at the top of the waiting list. Positions on waiting lists can go up or down. A child who is top of the waiting list one day may not be top the next.

If a place becomes available for your child from a waiting list, the School Admissions Team will allocate that place and send you an offer letter. At the same time, the existing offer of a place at a lower preference school is withdrawn. Following the new offer, any school(s) listed lower in preference to the offered school will be marked as no longer required.

If, at any time after completing your acceptance form, you want your child's name to be removed from a waiting list, please confirm in writing to the School Admissions Team and your request will be actioned.

To find out your child's waiting lists position for any preferred schools you should contact the School Admissions Team in the appropriate local authority. Please note that some "own admissions" schools hold their own waiting lists. Contact details can be found at the back of the guide.

From 1 September 2025, all waiting lists will change to in-year waiting lists. Some schools coordinate their own In-Year admissions and will hold their own waiting lists from this date. Community schools in Reading will hold waiting lists until the end of July 2026.

## School appeals

### Appealing the decision not to offer a place at your preferred school

If your child is not offered a place at your preferred school(s) you can appeal against the decision. You should make an appeal, if possible, by 15 May 2025 for it to be heard alongside others for the admission round. Appeals will be heard by an independent panel organised by the admission authority for the school.

Appeals submitted after the deadline will be dealt with separately.

Information on how to submit an appeal will be sent out with offer notifications and is available on the website [www.reading.gov.uk/schoolappeals](http://www.reading.gov.uk/schoolappeals)

All appeals are considered by a panel independent from the school and its decisions are legally binding on the school. The panel must weigh the impact of admitting an additional child to the school against the specific circumstances of the child and their family. Appeals lodged on time will be heard in the summer term from June - July 2025.

### How many parts are there to an appeal hearing?

There are two stages to the decision-making process. For grammar school appeals, the Appeal Panel must also be satisfied that your child is of the appropriate academic ability.

- **First Stage** – examining the decision to refuse admission. Sometimes, when there are multiple appeals for the same school and year group, stage 1 will be heard as a group stage meaning all the parents are invited to attend together.
- **Second Stage** – balancing the arguments - this is done on an individual appeal basis.

### Appeal decision making - infant class size appeals.

This is the decision-making process followed in respect of appeals for places in Reception to Year 2 where the infant class size limit of 30 children per teacher applies.

The law limits the size of an infant class (Reception, Year 1 and Year 2) to a maximum of 30 children per teacher.

Your appeal will be considered as an infant class size appeal if the admission authority would breach the infant class size limit by admitting your child and there are no measures it could take to avoid this without prejudicing the provision of efficient education or the efficient use of resources (i.e. having a detrimental impact on the education provided at the school and on the use of school resources).

In an infant class size appeal, the appeal panel reviews the admission authority's decision to refuse your child a place at the school. There are only very limited circumstances in which an infant class size appeal can be allowed and, as such, only a limited chance of your appeal being successful.

The Appeal Panel can only allow an infant class size appeal, where:

- it finds that the admission of an additional child would not breach the infant class size limit.
- it finds that the school's admission arrangements are unlawful, or have not been properly applied, and your child would have been offered a place at the school if the arrangements were lawful or had been properly applied.

- it decides that the decision to refuse admission was not one which a reasonable admission authority would have made in the circumstances of the case. To find a decision unreasonable, the appeal panel must determine the decision was one no reasonable admission authority would have made in the circumstances of your case, and the threshold for finding this is high. In this context, it is the legal meaning of “reasonableness” that applies, which means that an unreasonable decision is irrational or perverse.

In making your case in support of your appeal, you must show that: your child was refused a place as a result of admission arrangements which did not comply with the legal requirements of the School Admissions Code and the School Standards and Framework Act 1998; or that a mistake had been made by the admission authority, which if it had not happened, would have meant that your child would have been admitted to the school; or that the decision to refuse admission was not reasonable.

### What happens at an appeal hearing?

The appeal hearing will be as informal as possible, but the procedure - set out below - is followed to ensure everyone has the same opportunity to present their case and to ask questions.

Once the parent/carer who has submitted the appeal (the appellant) and the school’s representative have entered the room and are seated, the chair of the appeal panel will welcome everybody to the appeal hearing. Everyone present at the appeal will then be asked to introduce themselves. The chair will then go on to explain the set procedure and how the appeal panel reaches a decision. The procedure below will be followed at the appeal:

- The school’s representative will explain the reasons why a place could not be offered at the appellant’s preferred school.
- The appeal panel and the appellant may ask questions of the school’s representative about the reasons given and the written information they have submitted.
- The appellant will be given the opportunity to explain why they think their child should have a place at the school.
- The appeal panel and the school’s representative can ask the appellant questions about the reasons they have given and the written information they have submitted.
- The school’s representative will provide a summary of their case, without providing any new information.
- The appellant will be given an opportunity to provide a summary of their case, without providing any new information.
- The appellant and the school’s representative will be asked to leave the room at the same time, while the panel deliberates. Where there is more than one appeal for the same school on the same day, the panel deliberate at the end of the day.

### Does it cost me to attend an appeal?

No (bar any travel costs you incur). HOWEVER, it does cost the school approximately £215 per appeal heard.

### How many times can I appeal?

Parents/carers may only appeal once for the same child to the same school in the same school year. Parent/carers can make another appeal in the next school year.

The only exception to this is where there is a material and significant change in the circumstances of the parent/carer or child. This change must be relevant to the school application and must make a difference to whether a school would have allocated a place or not.

### For which schools may I lodge an appeal?

You can only appeal the decision not to be offered a school place for any schools listed as a higher preference, than the one you have been allocated. i.e. if you are offered your second preference you cannot appeal your third or fourth preferences.

### How likely is it that I will win an appeal?

Each appeal is judged on the information provided at that appeal. Appeals for places in infant class year groups (i.e. Reception to Year 2) are won only in exceptional cases due to the laws governing infant class sizes. You will normally only be successful if it can be proven that a mistake has been made and your child would have been offered a school place had your application been processed correctly.

### Will lodging an appeal affect the place at my allocated school?

No, appealing will not affect the place at the allocated school. Neither does accepting the allocated place. You still have the right to appeal the decision not to be offered a place at your preferred school.

## Questions & answers

**This section may help you with any questions that have arisen while reading this book. If you have any other questions, please contact the School Admissions Team on 0118 937 3777.**

### Do I have a choice regarding which school I send my child to?

While you do not have the right to choose which school your child will attend, you do have the right to express a preference. Where your preferred school has available places, your child will receive an offer. However, each school has a limited number of places and, where there are more applications than places, not every child will be offered a place. Places will be allocated according to the school's published oversubscription criteria found later in this guide.

Allocation tables for previous years, showing places offered for each school by categories and tiebreakers, may be found later in this guide. The tables show the lowest category at which a place was offered for each of the schools in Reading on National Offer Day. For schools in other boroughs, please visit the appropriate LA's website. Please note that this information should be used as a guide only – allocation numbers vary year-on-year, and this affects the lowest category at which offers are made.

### I live in Reading. How do I apply for schools in other areas?

You must apply through Reading for any school, even those schools situated in other local authorities. You must include them on your application which should be submitted to Reading School Admissions Team.

You will need to find out about the admission arrangements for any preferred school(s) in other areas. To do this, you may contact the local authority with responsibility for the school to obtain a copy of their admission guide. Contact details for neighbouring local authorities can be found at the back of this guide.

If, as a Reading resident, you apply directly to another local authority, the application will not be accepted.

### Does living in a designated (catchment) area guarantee I will get a place for my child at that school?

Children living in the catchment area of a school are given priority for admission but are not guaranteed a place. Any offer will depend on the number of applicants from the catchment area. Where there are more applicants from the catchment area than places available at the school, a place will only be offered if your child ranks higher in the oversubscription criteria than other applicants.

Some schools have been unable to admit all applicants from their catchment area for several years and places have been allocated using the distance tiebreaker.

### Do I have to put my designated (catchment) area school as a preference?

No. However, if you do not list your catchment area school (or schools) your child will not be considered for a place at that/those school(s). Living in the catchment area of a school does not guarantee admissions to that school. Equally, it does mean you must send your child to that school. However, places will not be reserved for your child at your catchment area school. You must list the school as a preference in order for your child to be considered for admission. If you do not list your



catchment area school as one of your preferences, and places are all allocated to those who did list it, your child will not be offered a place at the school (even where we cannot offer any of the schools you do list). You may then be offered a place at a school some distance from your home. As such, we suggest you consider listing your catchment area school as one of your preferences.

Please note, some home addresses do not have a catchment school. This is because not all primary/junior schools have catchment as part of their oversubscription criteria.

### How will my application be considered if my home is in the catchment area of more than one school?

You must list all the schools, in order of preference, for your child to be considered. Your application for each school will then be ranked according to the oversubscription criteria of each school. Where it is possible to offer a place at more than one school, you will be offered a place at the school ranked highest in your preference order. If you list a catchment school, your application will be considered, however it does not guarantee your child will get a place at the school. Please note, some home addresses do not have a catchment school. This is where the community school has converted to an academy and has removed catchment from their oversubscription criteria.

### Will my child get a place at the same school as their sibling(s)?

Most children are able to attend the same school as their sibling(s). However, there have been more cases (in recent years) where out-of-catchment children have not gained entry to the same school as their sibling(s). Please refer to the “past allocation tables” (found later in this guide) to see whether this applied to your preferred school.

Where parents/carers make an “on time” application for a place at their catchment area school and their child cannot be offered a place at the school because it is oversubscribed, a “sibling protection” applies. If the child is offered a lower preference Reading community primary school (or the local authority offer the child an alternative Reading community primary school), any younger siblings who subsequently apply for the offered school will be treated as “in-catchment” (i.e. considered under category 3) for that school.

Where a parent does not list their catchment area school(s) at the time of application - and would have been offered a place had they listed it - they forfeit the right to “sibling protection”.

Parents/carers must inform the School Admissions Team at the time of application if they consider this right applies.

**You must declare any sibling(s) in the relevant section on the application form.**

### My child already attends the nursery class at a school. Will they automatically be admitted to the reception class?

No. If your child has a place in the nursery class of a school, they will not necessarily remain at the same school when they reach school age. You will need to apply for a school place via Reading School Admissions Team by 15 January 2025.

### What if I want my child to attend a church school?

There are different types of schools with different church affiliations. The criteria for admission may be different. Details of the admission arrangements for Reading schools start on page 63. You may wish to complete the School Supplementary Form to enable the school to rank your application correctly.

Details about schools in other local authorities can be found from the schools or on the appropriate local authority website.

### Can you guarantee we will get one of the preferred schools we name?

No. The law does not guarantee a place at a preferred school. This would lead to overcrowding and pressure on facilities and resources. Although we expect to offer most applicants a place at one of their preferred schools, the likelihood of an offer depends on the schools you list and whether they are oversubscribed. Where a school is oversubscribed, the published oversubscription criteria for that school will apply. If you are not granted a place at a preferred school, you still have the right of appeal.

### What happens if I move?

Applications can only be processed on the basis of the child's current home address (refer to page 21 for definition). Places at oversubscribed schools cannot be reserved for children moving into the area.

If you have submitted an on-time application and relocate on (or before) the 1 February 2025, you must inform us of your change of address. You will need to submit the details to [admissions@brighterfuturesforchildren.org](mailto:admissions@brighterfuturesforchildren.org) along with evidence that your move has taken place. The evidence we require is proof that contracts have exchanged or a fully signed tenancy agreement. These must show your child will reside at the address past their entry into secondary school. If you have had a local move or moved within a 20-mile distance, we also require evidence that you have disposed of your previous property, i.e. a copy of the end of tenancy arrangements or proof contracts have exchanged.

### What if I do not apply by the deadline because I was not living in the area?

If you move into Reading before 1 February 2025, your application will be treated as an "on-time" application, providing you supply evidence that the move took place after 15 January but before 1 February. However, you must make it clear to the School Admissions Team that this is the reason for your late application. If you move after this date, your application will be considered as "late" and not processed until after the 7 May 2025.

### My child has an Education, Health and Care Plan (EHCP). How do I apply?

Although you will have discussed your child's primary school placement during their assessment or at their annual review, you must complete the SEND application form, which is available from the SEND Team.

### My child doesn't have an EHCP but has special educational needs, how will my application be treated?

Your application will be treated the same as every other application. Some schools do have a medical/social category as part of their oversubscription criteria. If you wish to be considered under this category, please consult the relevant school's policy, and provide evidence, as required.

### How will I know if the School Admissions Team has received my form?

If you apply online, you will receive an automated email to confirm that you have submitted your form.

If you submit a paper form the School Admissions Team will write to let you know that it has been received. You should receive your letter within 10 school days of submitting the application form. However, this depends on the volume of applications received by the team. If you have not received a response regarding your paper application by 1 February 2025, please contact the School Admissions Team.

### Are places allocated on a first come, first served basis?

No. However, parents should be aware that the first round of allocations only considers those applications received by the closing date.

### What can I do if I am not offered a place at my preferred school(s)?

If you are not offered a place at your preferred school(s) you may:

- appeal to an Independent Appeal Panel against the decision to refuse a place and
- accept the alternative place offered
- ask about the availability of places at other schools
- keep your child's name on the waiting list.

### I don't want to accept the place my child has been allocated, what should I do?

You must accept the allocated place. Doing so will not affect any higher preferences on the application or affect your right to appeal not getting a higher preference.

However, if you do not want to accept because you are moving out of the borough or have an alternative arrangement in place (e.g. your child will be attending an independent school) you must inform the School Admissions Team of this in writing, providing full details (e.g. the new area you are moving to, with full address or the name of the independent school).

### Can I home educate my child?

If you wish to home educate your child once they are of statutory school age you are entitled to do so. If you decide to do this, you should seek advice and register with Brighter Futures for Children Elective Home Educational Services. Further information is available at: <https://brighterfuturesforchildren.org/for-parents-carers/schools/elective-home-education/> or telephone 0118 937 3840 (Wednesday to Friday during school terms). You must also inform the school in writing of this decision.

### Will my child start full time immediately in September?

Individual schools will have a programme of induction that will be explained to parents before their child starts. Most primary schools in Reading will have a staggered start for their Reception class. However, if you wish, your child can attend full time from day one. You will need to discuss this with your child's allocated school.

### What if I don't want my child to start school in September 2025?

Your child does not have to start school in September 2025. However, you must apply for a place by the 15 January 2025. Once you have secured a place at a school it is possible to delay your child's start until they become statutory school age (see table on page 11). This is known as deferring entry. It is important to note that if you defer your child's entry into Reception, they may have only one or

two terms in Reception before transitioning into Year 1. If you decide to defer entry into Reception, you should discuss this with your child's school and they will hold the place for your child to start in either January (spring term) or April (summer term), as appropriate.

You may also wish to discuss your intentions with your child's current setting (i.e. nursery or child minder) in order to determine whether they have space available for your child to remain.

### Can my child attend school part-time?

Parents/carers may ask for a part-time place until their child reaches statutory school age.

Parents cannot insist that a school provide a part-time place which is individually tailored to their child. Parents/carers must discuss this with the headteacher. Most parents and schools will be able to organise an arrangement that is amenable to both parties. If parents/carers are considering this option, they should consider what it will mean to their child in terms of what he/she will be missing out on.

### Can my child start school outside their normal year group?

Parents may seek a place for their child outside their normal age group. This is called "offsetting" and might be requested where a child is gifted and talented or because they have experienced problems such as ill health. In addition, the parents of a summer born child might wish their child start school in the September following their fifth birthday. In such cases, they may request that their child is admitted out of their normal age group, e.g. to reception rather than Year 1.

In order to be considered, you must complete an application form as normal and also complete the Reading Offset request form (available on the website at the following link <https://brighterfuturesforchildren.org/for-parents-carers/schools/primary-admissions/> and return it to the School Admissions Team. The team will then coordinate the request with all your preferred schools, including those out of borough.

If the request is agreed and the 2025 application is withdrawn by the parent, a new application must be submitted for September 2025 entry. **A place cannot be held in reception for 2026 entry.** A child whose application is withdrawn due to offset is only entitled to their normal early years funding. If they only receive 15 hours, this is all they will get for the year. If a child receives 30 hours early years funding, they will continue to receive that amount.

The decision made by an admission authority is not binding on any other admission authority.

By law, a child may leave school on the last Friday in June of the academic year they turn 16, i.e. by the end of the summer holidays ([www.gov.uk/know-when-you-can-leave-school](http://www.gov.uk/know-when-you-can-leave-school)). As such, this has implications for children who are offset in that they may legally leave school at this time, perhaps without any GCSE qualifications. This would result in children receiving one year less education that is typically provided.

If a request is refused, parents must decide whether to accept the offered place, or refuse it and make an in-year application for a Year 1 place starting in September 2026.

Parents of children born between 01/09/2020 and 31/08/2021 should still apply before 15 January 2025 even if they are requesting that their child start school in Reception 2026.

## Can a place be withdrawn?

Yes – a place can be withdrawn for the following reasons:

- 1) School places are offered on the basis that the information provided on the application form is correct and up to date on National Offer Day. Where incorrect or intentionally misleading information is given, the School Admissions Team may withdraw the offer of a place. The address you give **MUST** be your child's only permanent home address. If you give an incorrect address or do not update us with any change of address, the offer may be withdrawn.
- 2) Where a place has been offered in error, that place may be withdrawn.
- 3) If a parent/carer has not responded to the offer of a place after receiving a reminder, the place offered may be withdrawn.

In all cases, a child would not be without a school. The School Admissions Team will allocate a place based upon a corrected application, which may not include any of the preference schools.

## In-year admissions

In-year admission is the term used for applications for children who are requiring admission after the start of the school year in Reception to Year 6.

Parent/carers who are seeking admission to a Reading borough school because they have moved to Reading, are new to the UK or simply wish to move their child to another school, must apply to the School Admissions Team by completing an 'in-year application form'. This form can be completed online or a paper form is available from the School Admissions Team upon request.

If you are a Reading resident, or moving into the borough, and you wish to apply for a school in Reading, you can do so by completing an in-year application form.

If you live in Reading and wish to apply for schools in neighbouring authorities, you should apply directly to the appropriate local authority. If you are Reading residents and your child is unplaced and they gain admission at a school outside of Reading, you must inform us of the allocation in writing.

Some schools in Reading coordinate their own in-year admissions. If you are interested in your child attending Christ the King RC Primary, Churchend Academy, St Johns CE Primary or The Heights Primary School, please apply directly to the schools.

If your child is unplaced and you are eligible to apply, then an in-year application should be completed as soon as possible.

More information on in-year admission can be found at:

<https://brighterfuturesforchildren.org/for-parents-carers/schools/in-year/>

## School transport

Brighter Futures for Children recognises the importance of encouraging sustainable travel to school to improve the safety and health of our children, as well as reducing the levels of traffic on the roads. Individual schools have travel plans setting out how each school intends to encourage children to travel sustainably.

Some parents/carers may be entitled to help with transport to school. Free home to school transport is based on the distance the pupil has to travel to school and, in some cases, the financial circumstances of the parent/carer. It is the local authority where a pupil or student lives – the ‘Home LA’ – that is responsible for any financial help with transport (not the LA where they attend school). This means we can only provide free home to school transport to eligible Reading Borough Council residents. We cannot provide free home to school transport to pupils who attend a Reading school, but who live outside the borough.

For pupils aged below eight years, transport assistance will only be considered where your child’s home address is further than two miles safe walking distance from the school and meets one of the following criteria:

- 1) attends the nearest appropriate school
- 2) attends a school that they were directed to by Brighter Futures for Children because the catchment area school was full.

For children over eight years, the safe walking distance is over three miles from the child’s home to the school.

Children aged over eight but under 11, from low-income families, may qualify for transport assistance if the home address is more than two miles from their nearest suitable primary school. The government defines children from low-income families as those who are entitled to free school meals, or those whose families are in receipt of the maximum level of Working Tax Credit.

Some children with Education, Health and Care Plans may also be entitled to assistance. Again, please contact the transport manager for details. Where pupils do qualify for school transport assistance, it is usually provided in the form of a bus pass (with a companion pass for an adult to accompany).

For further information regarding the ‘School Transport Service’, please contact:

**Telephone:** (0118) 937 2542

**Email:** [school.transport@brighterfuturesforchildren.org](mailto:school.transport@brighterfuturesforchildren.org)

**Address:** School Transport Service,  
Brighter Futures for Children  
Civic Offices  
Reading  
RG1 2LU



## Financial assistance, charging and general information

### Charging for school activities

No charge may be made for school activities by schools or the school governors unless it is already provided for in a statement of policy on charging and the remission of charges. Such statements will also usually cover arrangements for the financing of school activities by means of voluntary contributions.

### Free school meals

All schools within the borough of Reading deal with the administration of free school meals for pupils in attendance.

### Who is eligible?

Your child may be eligible for free school meals after this time, if you receive any of the following:

- Universal Credit (provided you have an annual net earned income of no more than £7,400, as assessed by earnings from up to three of your most recent assessment periods)
- Income Support
- income-based Jobseekers Allowance
- income-related Employment Support Allowance
- support under part six of the Immigration and Asylum Act 1999
- Child Tax Credit (provided you're not also entitled to Working Tax Credit and have an annual income of no more than £16,190)
- the guarantee element of State Pension Credit.

Note: If you are in receipt of Working Tax Credit during the four-week period immediately after your employment ceases, or after you start to work less than 16 hours per week, your child/children are entitled to free school meals.

Each term, parents/carers must demonstrate they are in receipt of one of the qualifying benefits by showing appropriate current documentary evidence to the school.

For further information and an application form, contact your child's school.

### Are free places available at independent schools, or is there help with independent school fees?

There are no free places available at independent schools. Reading has no schemes to help parents/carers wishing to educate children at independent schools.

### Can I get help with school uniform?

There is no support currently provided by Reading. Please contact your child's current school as they may be aware of support in this area. The Family Information Service (FIS) also has a list of charities that provide grants towards school uniforms (dependent on need and parent carer situation). They can be contacted as below.

### Reading Services Guide

The Family Information Service provides free individually tailored information, advice and guidance on any family matter. The service is available to any family member taking care of children or young

people aged 0-19 years of age inclusive (up to 25 years for children and young people with special needs, known as the SEND Local Offer) as well as professionals working with families in Reading.

They can also provide information on early years funding and childcare providers in Reading.

**Telephone:** 0118 937 3777 (option 2)

**Email:** [fis@reading.gov.uk](mailto:fis@reading.gov.uk)

**Website:** [www.reading.gov.uk/fis](http://www.reading.gov.uk/fis)



## Special educational needs and disabilities

### What are special educational needs (SEND)?

A child has special educational needs and/or disabilities (SEND) if they have greater difficulty in learning than most other children of about the same age. A child's SEND might relate to difficulties with communication and interaction, cognition and learning, social, emotional and mental health difficulties; or sensory and/or physical needs. Many children experience barriers to learning at some time in their education. These are often short term and support will be put in place by the school, using resources already available to schools.

### How can schools help?

Schools receive funding within their budget which they allocate to SEND support, to provide extra help for pupils with SEND. If a child is identified as having SEND, the school can set up an individual support plan which will set targets that are reviewed regularly with you. This may include extra help from a teacher or learning support assistant, or individual or small-group teaching for short periods. The level of help is matched to your child's needs, and you will be kept informed at each stage of the process.

Sometimes the school will call on the help and advice of other practitioners, such as an educational psychologist.

### Children with Education, Health and Care Plans (EHCP)

In most cases, schools will ensure that your child gets all the help they need. However, a few children will have more significant and long-term needs. These children may require an assessment

of their needs which may lead to the issue of an EHCP. Most children with an EHCP attend their local school and receive the support highlighted in their plan.

However, a child with an EHCP may need to attend a special school or a mainstream school with additional facilities for particular needs (such as hearing or visual impairment, physical difficulties, autism, learning needs, social emotional and mental health needs or speech, language and communication). If you think your child needs to attend a school with specialist support, you can contact the SEND Team for more information or check the Reading SEND Local Offer on [www.readingsendlocaloffer.org](http://www.readingsendlocaloffer.org) or you can contact Reading IASS (Information Advice & Support Service) on 0118 937 3421 or at [www.readingiass.org](http://www.readingiass.org).

### Applying for primary school or transfer to junior school

If your child has an EHCP, their future placement must be considered as part of the annual review of the EHCP and you will be part of those discussions.

Parents will be asked to complete a preference form. In most cases it will be possible to meet the parental preference for a named school. However, if you do not agree with the school being suggested you will be invited to discuss the matter with someone from the SEND team and ultimately will have the right to appeal to the SEND tribunal. The SEND team wish to work with you, so please do contact them to discuss placement.

The Reading IASS is also available to offer impartial advice and support to parents of children with special educational needs.

### Mainstream schooling

Most children will attend their local mainstream school according to their address. However, in cases where children attend a school that is not the nearest school, parents/carers will normally be expected to pay the full cost of the transport costs to the school.

### Specialist provision

If your preference is for a place in a resourced unit or special school, this information is passed to the SEND Team, if your child has an EHCP, for consideration. If your child does not have an EHCP, you will be contacted to advise you that you cannot choose the school. A move to a special school or to a resourced base in a mainstream school can only be considered if the school is suitable to your child's age, aptitude, ability and their special educational needs.

### Schools outside Reading borough

You may express a preference for your child to be placed in a mainstream school, a special school, or to a resourced base attached to a mainstream school outside Reading. The allocation of places in schools outside Reading is arranged with the governing body and the appropriate local authority. The SEND team must, by law, consult the admission authority and the governors of your preferred school. The admission authority may be the LA that maintains the school. Expressing a preference for a resourced base in a school outside Reading will not necessarily secure the admission of your child to either the school or the resource.

Your application will be processed by the SEND team and you will be informed which school will be named in your child's EHCP on or before 15 February 2025. If you need further advice or information, please contact the SEND Team on 0118 937 2674 or at [sen@brighterfuturesforchildren.org](mailto:sen@brighterfuturesforchildren.org).

## Independent support

You may also wish to talk to the SEND Information, Advice & Support Service (IASS), which can offer support and provide impartial information to help you be fully involved in your child's education.

Reading IASS: Tel: (0118) 937 3421 or [www.readingiass.org](http://www.readingiass.org)

# Allocations 2024

## Admissions to Community Primary Schools 2024

Brighter Futures for Children allocated these community schools and places using Reading Borough Council's published oversubscription criteria. Nevertheless, the tables below give a helpful indication as to how places are allocated.

School name	Admission number	Children in care, previously in care or have an EHCP	Children with strong social or medical grounds	Children in catchment area with a sibling at the school in Sept.	Children living in the catchment area of the school	Children not living in catchment area with a sibling at the school in Sept.	Children in receipt of EYPP attending the nursery at the school	Other children	Total	Diverts	Places available on National Offer Day	Number of children not offered place on National Offer Day
Alfred Sutton Primary School	90	0	0	14	29	18	1	28 (0.769)	90	0	0	14
Caversham Park Primary School	30	The school received fewer applications than the number of places available and therefore the applications were not ranked							8	0	22	0
Caversham Primary School	60	1	0	8	6	13	0	32 (1.218)	60	0	0	3
Coley Primary School	30	1	0	3	11	3	0	12 (0.453)	30	0	0	9
E P Collier Primary School	60	The school received fewer applications than the number of places available and therefore the applications were not ranked							53	1	7	0
Emmer Green Primary School	60	1	0	19	18	8	0	14 (1.132)	60	0	0	13
Geoffrey Field Infant School	90	The school received fewer applications than the number of places available and therefore the applications were not ranked							90	0	0	0
Katesgrove Primary School	90	0	0	17	44	5	0	24 (1) (0.570)	90	0	0	18
Manor Primary School	45	The school received fewer applications than the number of places available and therefore the applications were not ranked							44	1	1	0
Micklands Primary School	60	The school received fewer applications than the number of places available and therefore the applications were not ranked							40	1	20	0
Moorlands Primary School	60	The school received fewer applications than the number of places available and therefore the applications were not ranked							28	0	32	0
Oxford Road Community Primary School	30	1	2	8	19 (1) (0.230)	0	0	0	30	0	0	29
Park Lane Primary School	60	The school received fewer applications than the number of places available and therefore the applications were not ranked							43	0	17	0
Redlands Primary School	30	school received fewer applications than the number of places available and therefore the applications were not ranked							26	0	4	0
Southcote Primary School	90	The school received fewer applications than the number of places available and therefore the applications were not ranked							90	0	0	0
St Michael's Primary School	60	The school received fewer applications than the number of places available and therefore the applications were not ranked							52	0	8	0
Thameside Primary School	60	The school received fewer applications than the number of places available and therefore the applications were not ranked							41	0	19	0
The Hill Primary School	60	0	0	9	14	13	0	24 (0.943)	60	0	0	7
The Ridgeway Primary School	90	The school received fewer applications than the number of places available and therefore the applications were not ranked							45	0	15	0
Whitley Park Primary School	90	The school received fewer applications than the number of places available and therefore the applications were not ranked							50	0	40	0
Wilson Primary School	60	0	4	13	43 (0.374)	0	0	0	60	0	0	18

## Admissions to Voluntary-Aided and Academy Schools 2024

The places at these schools were allocated according to the admission policy of the schools. Where it was not possible to allocate all the children in one category (Cat), the tiebreaker was applied, and the last distance offered is in brackets. The distance was measured in miles using digital mapping software.

School name	Admission number	Cat 1 or have EHCP	Cat 2	Cat 3	Cat 4	Cat 5	Cat 6	Cat 7	Cat 8	Cat 9	Total	Diverts	Places available on National Offer Day	No. of children not offered place on National Offer Day
All Saints CE Infant School	20	0	0	5	15 (0.346)	-	-	-	-	-	20	0	0	9
Battle Primary Academy	60	0	0	0	28	8	23 (0.445)	-	-	-	60	0	0	5
Christ the King Catholic Primary	45	<i>As this school was not oversubscribed on offer day, applicants were not ranked.</i>									36	0	9	0
Churchend Academy	60	<i>As this school was not oversubscribed on offer day, applicants were not ranked.</i>									56	0	4	0
Civitas Academy	60	<i>As this school was not oversubscribed on offer day, applicants were not ranked.</i>									40	4	20	0
English Martyrs' Catholic Primary	60	<i>As this school was not oversubscribed on offer day, applicants were not ranked.</i>									39	1	21	0
Green Park Village Academy	60	<i>As this school was not oversubscribed on offer day, applicants were not ranked.</i>									41	0	19	0
Meadow Park Academy	60	<i>As this school was not oversubscribed on offer day, applicants were not ranked.</i>									35	0	25	0
New Christ Church CE Primary	30	<i>As this school was not oversubscribed on offer day, applicants were not ranked.</i>									26	1	4	0
New Town Primary	60	<i>As this school was not oversubscribed on offer day, applicants were not ranked.</i>									45	1	15	0
Ranikhet Academy	30	<i>As this school was not oversubscribed on offer day, applicants were not ranked.</i>									25	2	5	0
St Anne's Catholic Primary	30	<i>As this school was not oversubscribed on offer day, applicants were not ranked.</i>									17	0	13	0
St John's CE Primary School	60	1	26	0	2	31 (0.417)					60	0	0	1
St Martin's Catholic Primary	30	<i>As this school was not oversubscribed on offer day, applicants were not ranked.</i>									19	0	11	0
St Mary and All Saints CE Primary	60	<i>As this school was not oversubscribed on offer day, applicants were not ranked.</i>									28	4	32	0
The Heights Primary School	50	0	0	19	0	28	1	2 (1.082)	-	-	50	0	0	13
The Palmer Academy	60	<i>As this school was not oversubscribed on offer day, applicants were not ranked.</i>									60	2	0	0

## Admissions to Junior Schools 2024

The places at these schools were allocated according to the admission policy of the schools. Where it was not possible to allocate all the children in one category (Cat), the tiebreaker was applied, and the last distance offered is in brackets. The distance was measured in miles using digital mapping software.

School name	Admission Number	Students with EHCP / Cat 1	Cat 2	Cat 3	Cat 4	Cat 5	Cat 6	Cat 7	Total	Diverts	Places available on National Offer Day	Number of children not offered place on National Offer Day	
All Saints Junior School	25	<i>As this school was not oversubscribed on offer day, applicants were not ranked.</i>						-	-	23	0	2	0
Geoffrey Field Junior School	90	<i>As this school was not oversubscribed on offer day, applicants were not ranked.</i>								81	0	9	0

## Past allocations 2023

### Admissions to Community Primary Schools 2023

Brighter Futures for Children allocated these community schools and places using Reading Borough Council's published oversubscription criteria. Nevertheless, the tables below give a helpful indication as to how places are allocated.

School name	Admission number	Children in care, previously in care or have an EHCP	Children with strong social or medical grounds	Children in catchment area with a sibling at the school in Sept.	Children living in the catchment area of the school	Children not living in catchment area with a sibling at the school in Sept.	Children in receipt of EYPP attending the nursery at the school	Other children	Total	Diverts	Places available on National Offer Day	Number of children not offered place on National Offer Day
Alfred Sutton Primary School	90	The school received fewer applications than the number of places available and therefore the applications were not ranked							85	0	5	0
Caversham Park Primary School	30	The school received fewer applications than the number of places available and therefore the applications were not ranked							8	0	22	0
Caversham Primary School	60	0	0	12	14 (1)	17	0	17 (0.472)	60	0	0	31
Coley Primary School	30	0	0	6	14	5	0	5 (0.328)	30	0	0	17
E P Collier Primary School	60	The school received fewer applications than the number of places available and therefore the applications were not ranked							39	0	21	0
Emmer Green Primary School	60	0	0	17	22	4	0	17 (0.925)	60	0	0	14
Geoffrey Field Infant School	90	1	0	18	39 (1)	8	0	24 (2) (0.814)	90	0	0	8
Katesgrove Primary School	90	0	0	14	48	8	0	20 (1) (0.819)	90	0	0	8
Manor Primary School	45	The school received fewer applications than the number of places available and therefore the applications were not ranked							27	0	18	0
Micklands Primary School	60	The school received fewer applications than the number of places available and therefore the applications were not ranked							32	2	28	0
Moorlands Primary School	60	The school received fewer applications than the number of places available and therefore the applications were not ranked							31	0	29	0
Oxford Road Community Primary School	30	0	0	8	22 (5)	0	0	0 (0.184)	30	0	0	30
Park Lane Primary School	60	The school received fewer applications than the number of places available and therefore the applications were not ranked							51	0	9	0
Redlands Primary School	30	0	0	8	13	1	0	8 (0.834)	30	0	0	1
Southcote Primary School	90	The school received fewer applications than the number of places available and therefore the applications were not ranked							42	0	48	0
St Michael's Primary School	60	The school received fewer applications than the number of places available and therefore the applications were not ranked							45	1	15	0
Thameside Primary School	60	The school received fewer applications than the number of places available and therefore the applications were not ranked							44	2	16	0
The Hill Primary School	60	1	0	13	15	12	0	19 (0.914)	60	0	0	14
The Ridgeway Primary School	90	The school received fewer applications than the number of places available and therefore the applications were not ranked							35	0	25	0
Whitley Park Primary School	90	The school received fewer applications than the number of places available and therefore the applications were not ranked							44	1	46	0
Wilson Primary School	60	0	0	22	38	0	0	0 (0.343)	60	0	0	27



## Admissions to Voluntary-Aided and Academy Schools 2023

The places at these schools were allocated according to the admission policy of the schools. Where it was not possible to allocate all the children in one category (Cat), the tiebreaker was applied, and the last distance offered is in brackets. The distance was measured in miles using digital mapping software.

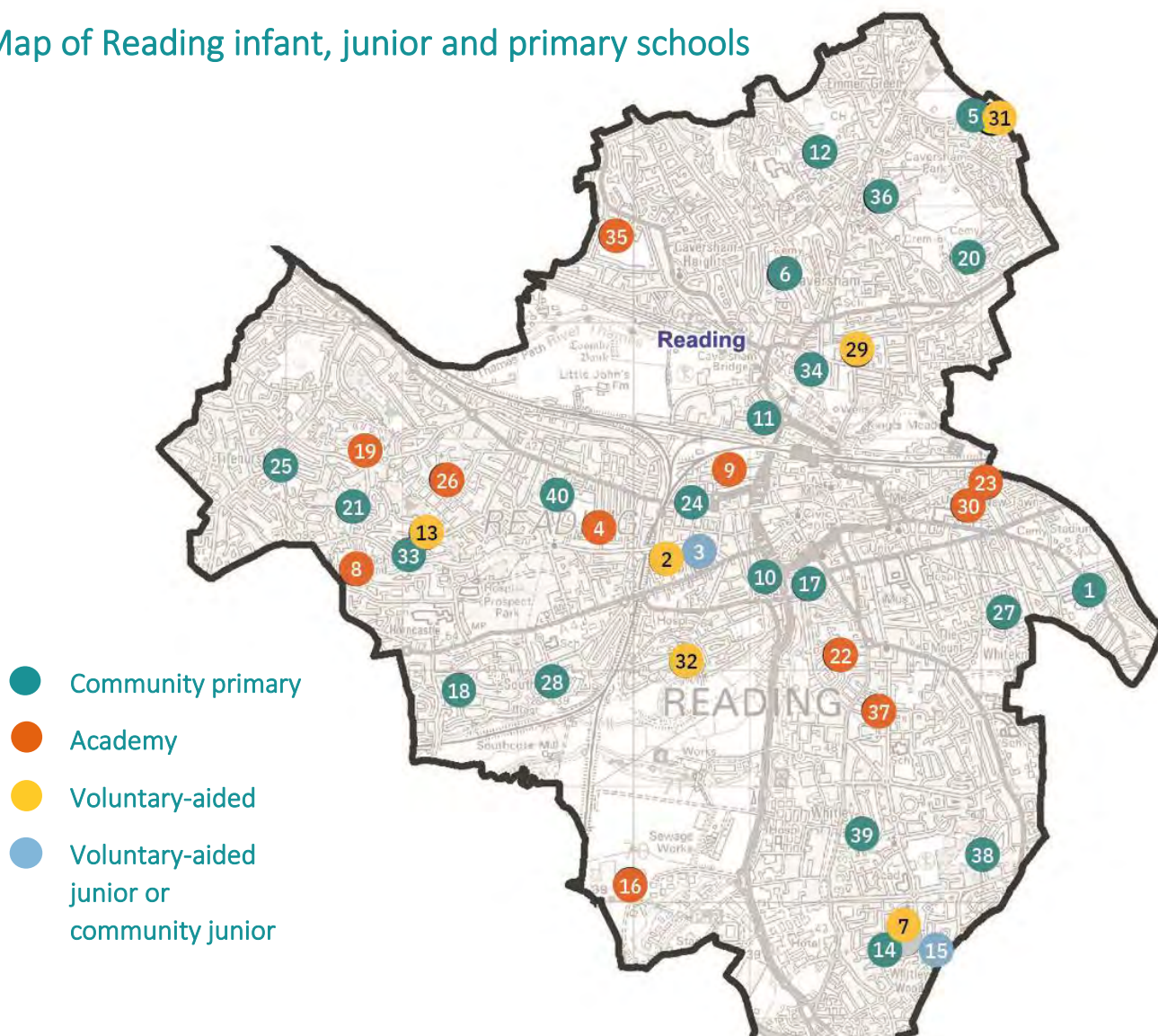
School name	Admission number	Cat 1 or have EHCP	Cat 2	Cat 3	Cat 4	Cat 5	Cat 6	Cat 7	Cat 8	Cat 9	Total	Diverts	Places available on National Offer Day	No. of children not offered place on National Offer Day	
All Saints CE Infant School	20	0	0	8	12 (0.265)	-	-	-	-	-	20	0	0	16	
Battle Primary Academy	60	<i>As this school was not oversubscribed on offer day, applicants were not ranked.</i>										52	3	8	0
Christ the King Catholic Primary	45	<i>As this school was not oversubscribed on offer day, applicants were not ranked.</i>										34	0	11	0
Churchend Academy	60	0	0	1	20	7	32 (1.480)	-	-	-	60	0	0	2	
Civitas Academy	60	<i>As this school was not oversubscribed on offer day, applicants were not ranked.</i>										47	3	13	0
English Martyrs' Catholic Primary	60	<i>As this school was not oversubscribed on offer day, applicants were not ranked.</i>										51	2	9	0
Green Park Village Academy	60	<i>As this school was not oversubscribed on offer day, applicants were not ranked.</i>										44	0	16	0
Meadow Park Academy	60	<i>As this school was not oversubscribed on offer day, applicants were not ranked.</i>										33	3	27	0
New Christ Church CE Primary	30	<i>As this school was not oversubscribed on offer day, applicants were not ranked.</i>										20	1	10	0
New Town Primary	60	<i>As this school was not oversubscribed on offer day, applicants were not ranked.</i>										41	2	19	0
Ranikhet Academy	30	<i>As this school was not oversubscribed on offer day, applicants were not ranked.</i>										30	1	0	0
St Anne's Catholic Primary	30	<i>As this school was not oversubscribed on offer day, applicants were not ranked.</i>										21	0	9	0
St John's CE Primary School	60	<i>As this school was not oversubscribed on offer day, applicants were not ranked.</i>										40	2	20	0
St Martin's Catholic Primary	30	<i>As this school was not oversubscribed on offer day, applicants were not ranked.</i>										12	0	18	0
St Mary and All Saints CE Primary	60	<i>As this school was not oversubscribed on offer day, applicants were not ranked.</i>										30	2	30	0
The Heights Primary School	50	0	0	16	0	31	3	0 (1.209)	-	-	50	0	0	19	
The Palmer Academy	60	<i>As this school was not oversubscribed on offer day, applicants were not ranked.</i>										47	0	13	0

## Admissions to Junior Schools 2023

The places at these schools were allocated according to the admission policy of the schools. Where it was not possible to allocate all the children in one category (Cat), the tiebreaker was applied, and the last distance offered is in brackets. The distance was measured in miles using digital mapping software.

School name	Admission Number	Students with EHCP / Cat 1	Cat 2	Cat 3	Cat 4	Cat 5	Cat 6	Cat 7	Total	Diverts	Places available on National Offer Day	Number of children not offered place on National Offer Day		
All Saints Junior School	25	0	0	19	0	6 (0.604)	-	-	25	0	0	4		
Geoffrey Field Junior School	90	<i>As this school was not oversubscribed on offer day, applicants were not ranked.</i>									67	0	23	0

## Map of Reading infant, junior and primary schools



ID	School	ID	School
1	Alfred Sutton Primary School	21	Moorlands Primary School
2	All Saints CE Infant	22	New Christ Church CE Primary
3	All Saints CE Junior	23	New Town Primary School
4	Battle Primary Academy	24	Oxford Road Community School
5	Caversham Park Primary School	25	Park Lane Primary School
6	Caversham Primary School	26	Ranikhet Academy
7	Christ the King RC Primary	27	Redlands Primary School
8	Churchend Primary Academy	28	Southcote Primary School
9	Civitas Academy	29	St Anne's RC Primary School
10	Coley Primary School	30	St John's CE Primary School
11	E P Collier Primary School	31	St Martin's CE Primary School
12	Emmer Green Primary School	32	St Mary & All Saints CE Primary
13	English Martyrs RC Primary	33	St Michael's Primary School
14	Geoffrey Field Infant School	34	Thameside Primary School
15	Geoffrey Field Junior School	35	The Heights Primary School
16	Green Park Village Academy	36	The Hill Primary School
17	Katesgrove Primary School	37	The Palmer Primary Academy
18	Manor Primary School	38	The Ridgeway Primary School
19	Meadow Park Academy	39	Whitley Park Primary School
20	Micklands Primary School	40	Wilson Primary School

## List of infant, junior, primary schools in the Reading borough

The information below was correct at time of publishing but is subject to change. Please enquire with each school about their school day times and if they have provision of Breakfast or After School clubs.

### Infant & Primary Schools

Alfred Sutton Primary School					C
148 Wokingham Road, Reading, RG6 1JR		Headteacher:	Mr Robert Howell		
Telephone:	0118 937 5411	<a href="http://www.alfredsuttonprimary.co.uk">www.alfredsuttonprimary.co.uk</a>			
Age range:	4-11	Admission number:	90		
School day:	8.50am – 3.10pm	DfE NO:	2000		
Breakfast club:	Yes	After school club:	Yes	Nursery:	Yes

All Saints Church of England Aided Infant School					VA
Brownlow Road, Reading, RG1 6NP		Headteacher:	Mrs Susannah Daniel		
Telephone:	0118 901 5413	<a href="http://www.allsaints.reading.sch.uk">www.allsaints.reading.sch.uk</a>			
Age range:	4-7	Admission number:	20		
School day:	8.40am – 3.10pm	DfE NO:	3000		
Breakfast club:	Yes	After school club:	No	Nursery:	No

Battle Primary Academy					A
Cranbury Road, Reading, RG30 2TD		Headteacher:	Ms Louise Burridge		
Telephone:	0118 937 5421	<a href="http://www.battleprimary.co.uk">www.battleprimary.co.uk</a>			
Age range:	4-11	Admission number:	60		
School day:	8.45am – 3.15pm	DfE NO:	2011		
Breakfast club:	Yes	After school club:	No	Nursery:	Yes

Caversham Park Primary School					C
Queensway, Caversham Park Village, Reading, RG4 6RP		Headteacher:	Miss Gail Ray		
Telephone:	0118 937 5433	<a href="http://www.cavershamparkprimaryschool.co.uk">www.cavershamparkprimaryschool.co.uk</a>			
Age range:	4-11	Admission number:	30		
School day:	8.45am – 3.15pm	DfE NO:	2233		
Breakfast club:	Yes	After school club:	Yes	Nursery:	No

Caversham Primary School					C
Hemdean Road, Caversham, Reading, RG4 7RA		Acting Co-Headteachers:	Mrs Jo Grover and Mrs Clare Jones-King		
Telephone:	0118 937 5454	<a href="http://www.cavershamprimary.org">www.cavershamprimary.org</a>			
Age range:	4-11	Admission number:	60		
School day:	8.40am – 3.10pm	DfE NO:	2003		
Breakfast club:	Yes	After school club:	Yes	Nursery:	No

Christ the King Catholic Primary School (with special unit for autism)					VA
Lulworth Road, Reading, RG2 8LX			Headteacher:	Mrs Nikki McVeigh	
Telephone:	0118 937 5434		<a href="https://www.christthekingreading.co.uk/">https://www.christthekingreading.co.uk/</a>		
Age range:	4-11		Admission number:	45	
School day:	8.50am – 3.20pm		DfE NO:	3305	
Breakfast club:	Yes	After school club:	Yes	Nursery:	Yes

Churchend Primary Academy					A
Usk Road, Tilehurst, Reading, RG30 4HP			Acting Headteacher:	Helen Clark	
Telephone:	0118 937 5450		<a href="http://www.churchendacademy.com">www.churchendacademy.com</a>		
Age range:	4-11		Admission number:	60	
School day:	8.50am – 3.15pm		DfE NO:	2031	
Breakfast club:	Yes	After school club:	Yes	Nursery:	Yes

Civitas Academy					A
90a Great Knollys Street, Reading, RG1 7HL			Executive Head:	Mrs Salima Ducker	
Telephone:	0118 467 6720		<a href="http://www.civitasacademy.co.uk">www.civitasacademy.co.uk</a>		
Age range:	4-11		Admission number:	60	
School day:	Infants- 8:45am-3:15pm Junior- 8:55am - 3:25pm		DfE NO:	2015	
Breakfast club:	Yes	After school club:	Yes	Nursery:	No

Coley Primary School					C
Wolseley Street, Reading, RG1 6AZ			Headteacher:	Mrs Sarah Pengelly	
Telephone:	0118 937 5461		<a href="http://www.coleyprimary.reading.sch.uk">www.coleyprimary.reading.sch.uk</a>		
Age range:	4-11		Admission number:	30	
School day:	8.45am – 3.15pm		DfE NO:	2005	
Breakfast club:	No	After school club:	No	Nursery:	Yes

Emmer Green Primary School					C
Grove Road, Emmer Green, Reading, RG4 8LN			Headteacher:	Mrs Tonia Crossman	
Telephone:	0118 937 5464		<a href="http://www.emmergreenprimary.com">www.emmergreenprimary.com</a>		
Age range:	4-11		Admission number:	60	
School day:	8.45am – 3.15pm		DfE NO:	2026	
Breakfast club:	Yes	After school club:	Yes	Nursery:	No

English Martyrs' Catholic Primary School					VA
Dee Road, Tilehurst, Reading, RG30 4BE			Headteacher:	Mrs Catherine Doberska	
Telephone:	0118 937 5466		<a href="http://www.englishmartyrs.reading.sch.uk">www.englishmartyrs.reading.sch.uk</a>		
Age range:	4-11		Admission number:	60	
School day:	8.45am – 3.15pm		DfE NO:	3304	
Breakfast club:	Yes	After school club:	Yes	Nursery:	Yes

E P Collier Primary School (with special unit for speech and language)					C
Ross Road, Reading, RG1 8DZ		Headteacher:	Mrs Justine McMinn		
Telephone:	0118 937 5470	<a href="http://www.epcollier.reading.sch.uk">www.epcollier.reading.sch.uk</a>			
Age range:	4-11	Admission number:	60		
School day:	8.40am – 3.00pm	DfE NO:	2006		
Breakfast club:	Yes	After school club:	Yes	Nursery:	Yes

Geoffrey Field Infant School					C
Exbourne Road, Reading, RG2 8RH		Headteacher:	Miss Zoe Dean		
Telephone:	0118 937 5473	<a href="http://www.geoffreyfieldinfant.co.uk">www.geoffreyfieldinfant.co.uk</a>			
Age range:	4-7	Admission number:	90		
School day:	8.45am – 3.15pm	DfE NO:	2008		
Breakfast club:	Yes	After school club:	Yes	Nursery:	Yes

Green Park Village Primary Academy					A
2 Flagstaff Road, Green Park, Reading, RG2 6AX		Headteacher:	Miss Gemma Jackson		
Telephone:	0118 467 6222	<a href="http://www.greenparkvillageacademy.org">www.greenparkvillageacademy.org</a>			
Age range:	From September 2025, reception to Year 4 (4-9 years) age only. (3-11 when open to all cohorts)	Admission number:	60		
School day:	8.45am – 3.15pm	DfE NO:	2039		
Breakfast club:	Yes	After school club:	yes	Nursery:	No

Katesgrove Primary School					C
Dorothy Street, Reading, RG1 2NL		Executive Head:	Mrs Lisa Telling		
Telephone:	0118 937 5490	<a href="http://www.katesgroveprimaryschool.co.uk">www.katesgroveprimaryschool.co.uk</a>			
Age range:	4-11	Admission number:	90		
School day:	8.45am – 3.15pm	DfE NO:	2226		
Breakfast club:	Yes	After school club:	Yes	Nursery:	Yes

Manor Primary School					C
110 Ashampstead Road, Reading, RG30 3LJ		Headteacher	Mrs Fiona Swain		
Telephone:	0118 937 5494	<a href="http://www.manorprimary.net">www.manorprimary.net</a>			
Age range:	4-11	Admission number:	45		
School day:	8.45am – 3.15pm	DfE NO:	2253		
Breakfast club:	Yes	After school club:	Yes	Nursery:	Yes



Meadow Park Academy						A
Norcot Road, Reading, RG30 6BS			Headteacher:	Ms Kirsty Holehouse		
Telephone:	0118 937 5562		<a href="http://www.meadowpark.anthemtrust.uk">www.meadowpark.anthemtrust.uk</a>			
Age range:	4-11		Admission number:	60		
School day:	8.40am – 3.15pm		DfE NO:	2004		
Breakfast club:	Yes	After school club:	yes	Nursery:	No	

Micklands Primary School						C
Micklands Road, Reading, RG4 6LU			Headteacher:	Mr Mark Frost		
Telephone:	0118 937 5500		<a href="http://www.micklands.reading.sch.uk">www.micklands.reading.sch.uk</a>			
Age range:	4-11		Admission number:	60		
School day:	8.30am – 3.20pm		DfE NO:	2234		
Breakfast club:	Yes	After school club:	Yes	Nursery:	No	

Moorlands Primary School						C
Church End Lane, Tilehurst, Reading, RG30 4UN			Executive Head:	Mrs Nicola Browne		
Telephone:	0118 937 5505		<a href="http://www.moorlandps.org.uk">www.moorlandps.org.uk</a>			
Age range:	4-11		Admission number:	60		
School day:	8.50am – 3.20pm		DfE NO:	2034		
Breakfast club:	Yes	After school club:	Yes	Nursery:	Yes	

New Christ Church, Church of England Primary School						A
Milman Road, Reading, RG2 0AY			Headteacher:	Mrs Alison Crooks / Mrs Joss Kitching		
Telephone:	0118 937 5437		<a href="http://www.newchristchurch.reading.sch.uk">www.newchristchurch.reading.sch.uk</a>			
Age range:	4-11		Admission number:	30		
School day:	8.45– 3.15pm		DfE NO:	2254		
Breakfast club:	No	After school club:	Yes	Nursery:	No	

New Town Primary School						A
School Terrace, Reading, RG1 3LS			Headteacher:	Ms Polly Cornish		
Telephone:	0118 937 5509		<a href="http://www.newtown.reading.sch.uk">www.newtown.reading.sch.uk</a>			
Age range:	4-11		Admission number:	60		
School day:	8.45am – 3.15pm		DfE NO:	2028		
Breakfast club:	Yes	After school club:	No	Nursery:	Yes	

Oxford Road Community School						C
146 Oxford Road, Reading, RG1 7PJ			Headteacher:	Mrs Claire Hurst		
Telephone:	0118 937 5511		<a href="https://oxfordroad.reading.sch.uk/">https://oxfordroad.reading.sch.uk/</a>			
Age range:	4-11		Admission number:	30		
School day:	8.50am – 3.15pm		DfE NO:	2016		
Breakfast club:	Yes	After school club:	Yes	Nursery:	Yes	

Park Lane Primary School						C
School Road, Tilehurst, Reading, RG31 5BD			Headteacher:	Mrs Nicola Browne		
Telephone:	0118 937 5515		<a href="http://www.parklaneps.org.uk">www.parklaneps.org.uk</a>			
Age range:	4-11		Admission number:	60		
School day:	Infants 8.40am – 3.15pm Juniors 8.40am – 3.25pm		DfE NO:	2022		
Breakfast club:	Yes	After school club:	Yes	Nursery:	No	

Ranikhet Academy						A
Spey Road, Reading, RG30 4ED			Headteacher:	Miss Louisa Sanghera		
Telephone:	0118 937 5520		<a href="http://www.ranikhetacademy.co.uk">www.ranikhetacademy.co.uk</a>			
Age range:	4-11		Admission number:	30		
School day:	8.40am – 3.20pm		DfE NO:	2025		
Breakfast club:	Yes	After school club:	Yes	Nursery:	Yes	

Redlands Primary School						C
Lydford Road, Tilehurst, Reading, RG1 5QH			Head of School:	Ms Laura Kerr		
Telephone:	0118 937 5527		<a href="http://www.redlandsschool.co.uk">www.redlandsschool.co.uk</a>			
Age range:	4-11		Admission number:	30		
School day:	8.50am – 3.15pm		DfE NO:	2018		
Breakfast club:	Yes	After school club:	Yes	Nursery:	Yes	

Southcote Primary School						C
Silchester Road, Reading, RG30 3EJ			Headteacher:	Mrs Lisa Telling		
Telephone:	0118 937 5533		<a href="http://www.southcoteprimary.co.uk">www.southcoteprimary.co.uk</a>			
Age range:	4-11		Admission number:	90		
School day:	8.45am – 3.15pm		DfE NO:	2027		
Breakfast club:	Yes	After school club:	Yes	Nursery:	No	

St Anne's Catholic Primary School						VA
Washington Road, Reading, RG4 5AA			Headteacher:	Mrs Bridget Tobin		
Telephone:	0118 937 5466		<a href="http://www.st-annes.reading.sch.uk">www.st-annes.reading.sch.uk</a>			
Age range:	4-11		Admission number:	30		
School day:	8.40am – 3.25pm		DfE NO:	3302		
Breakfast club:	Yes	After school club:	Yes	Nursery:	Yes	

St John's Church of England Primary School						A
121-147 Orts Road, Reading, RG1 3JN			Headteacher:	Ms Martina Parsons		
Telephone:	0118 937 5540		<a href="http://www.stjohns.reading.sch.uk">www.stjohns.reading.sch.uk</a>			
Age range:	4-11		Admission number:	60		
School day:	8.40am – 3.10pm		DfE NO:	3300		
Breakfast club:	Yes	After school club:	Yes	Nursery:	Yes	



St Martin's Catholic Primary School					VA
Pendennis Avenue, Caversham Park Village, Reading, RG4 5AA			Headteacher:	Mrs Katherine Tilling	
Telephone:	0118 937 5544		<a href="http://www.stmartinscaversham.co.uk">www.stmartinscaversham.co.uk</a>		
Age range:	4-11		Admission number:	30	
School day:	8.40am – 3.15pm		DfE NO:	3360	
Breakfast club:	Yes	After school club:	Yes	Nursery:	No

St Mary & All Saints Church of England Primary School					A
Wensley Road, Reading, RG1 6DU			Headteacher:	Mr Matt Parting	
Telephone:	0118 937 5545		<a href="http://www.stmaryandallsaints.co.uk">www.stmaryandallsaints.co.uk</a>		
Age range:	4-11		Admission number:	60	
School day:	8.40am – 3.20pm		DfE NO:	2035	
Breakfast club:	Yes	After school club:	Yes	Nursery:	Yes

St Michaels Primary School					C
Dee Road, Tilehurst, Reading, RG30 4AS			Headteacher:	Miss Aimee Crofts	
Telephone:	0118 901 5550		<a href="http://www.stmichaels.reading.sch.uk">www.stmichaels.reading.sch.uk</a>		
Age range:	4-11		Admission number:	60	
School day:	8.50am – 3.15pm		DfE NO:	2029	
Breakfast club:	Yes	After school club:	Yes	Nursery:	No

Thameside Primary School					C
Harley Road, Caversham, Reading, RG4 8DB			Headteacher:	Mrs Sophie Greenaway	
Telephone:	0118 937 5551		<a href="http://www.thamesideprimary.co.uk">www.thamesideprimary.co.uk</a>		
Age range:	4-11		Admission number:	60	
School day:	8.45am – 3.15pm		DfE NO:	2036	
Breakfast club:	Yes	After school club:	Yes	Nursery:	No

The Heights Primary School					A
Upper Woodcote Road, Caversham, Reading, RG4 7LB			Headteacher:	Mrs Hayley Harrison	
Telephone:	0118 357 0123		<a href="https://www.theheightsprimary.co.uk/">https://www.theheightsprimary.co.uk/</a>		
Age range:	4-11		Admission number:	50	
School day:	8.45am – 3.15pm		DfE NO:	2017	
Breakfast club:	Yes	After school club:	Yes	Nursery:	No

The Hill Primary School					C
Peppard Road, Emmer Green, Reading, RG4 8TU			Headteacher:	Mr Rob Jones	
Telephone:	0118 937 5560		<a href="http://www.thehillprimary.org.uk">www.thehillprimary.org.uk</a>		
Age range:	4-11		Admission number:	60	
School day:	8.45am – 3.15pm		DfE NO:	2019	
Breakfast club:	Yes	After school club:	Yes	Nursery:	No

The Palmer Primary Academy					A
70 Northumberland Avenue, Reading, RG2 7PP		Headteacher:	Miss Anne Higginbotham		
Telephone:	0118 937 5481	<a href="http://www.thepalmeracademy.com">www.thepalmeracademy.com</a>			
Age range:	4-11	Admission number:	60		
School day:	8.50am – 3.20pm	DfE NO:	2012		
Breakfast club:	Yes	After school club:	Yes	Nursery:	Yes

The Ridgeway Primary School					C
Hillbrow, Reading, RG2 8JD		Headteacher:	Mrs Norah Edgar		
Telephone:	0118 937 5530	<a href="http://www.theridgewayprimary.net">www.theridgewayprimary.net</a>			
Age range:	4-11	Admission number:	60		
School day:	8.50am – 3.15pm	DfE NO:	2020		
Breakfast club:	Yes	After school club:	Yes	Nursery:	Yes

Whitley Park Primary and Nursery School					C
Brixham Road, Reading, RG2 7RB		Headteacher:	Mr Nathan Butler-Broad		
Telephone:	0118 937 5566	<a href="http://www.whitleyparkprimaryschool.co.uk">www.whitleyparkprimaryschool.co.uk</a>			
Age range:	4-11	Admission number:	90		
School day:	8.45am – 3.15pm	DfE NO:	3361		
Breakfast club:	Yes	After school club:	Yes	Nursery:	Yes

Wilson Primary School					C
Wilson Road, Reading, RG30 2RW		Headteacher:	Mrs Claire Hurst		
Telephone:	0118 937 5573	<a href="http://www.wilsonprimary.co.uk">www.wilsonprimary.co.uk</a>			
Age range:	4-11	Admission number:	60		
School day:	8.50am – 3.15pm	DfE NO:	2025		
Breakfast club:	Yes	After school club:	Yes	Nursery:	Yes

## Junior schools

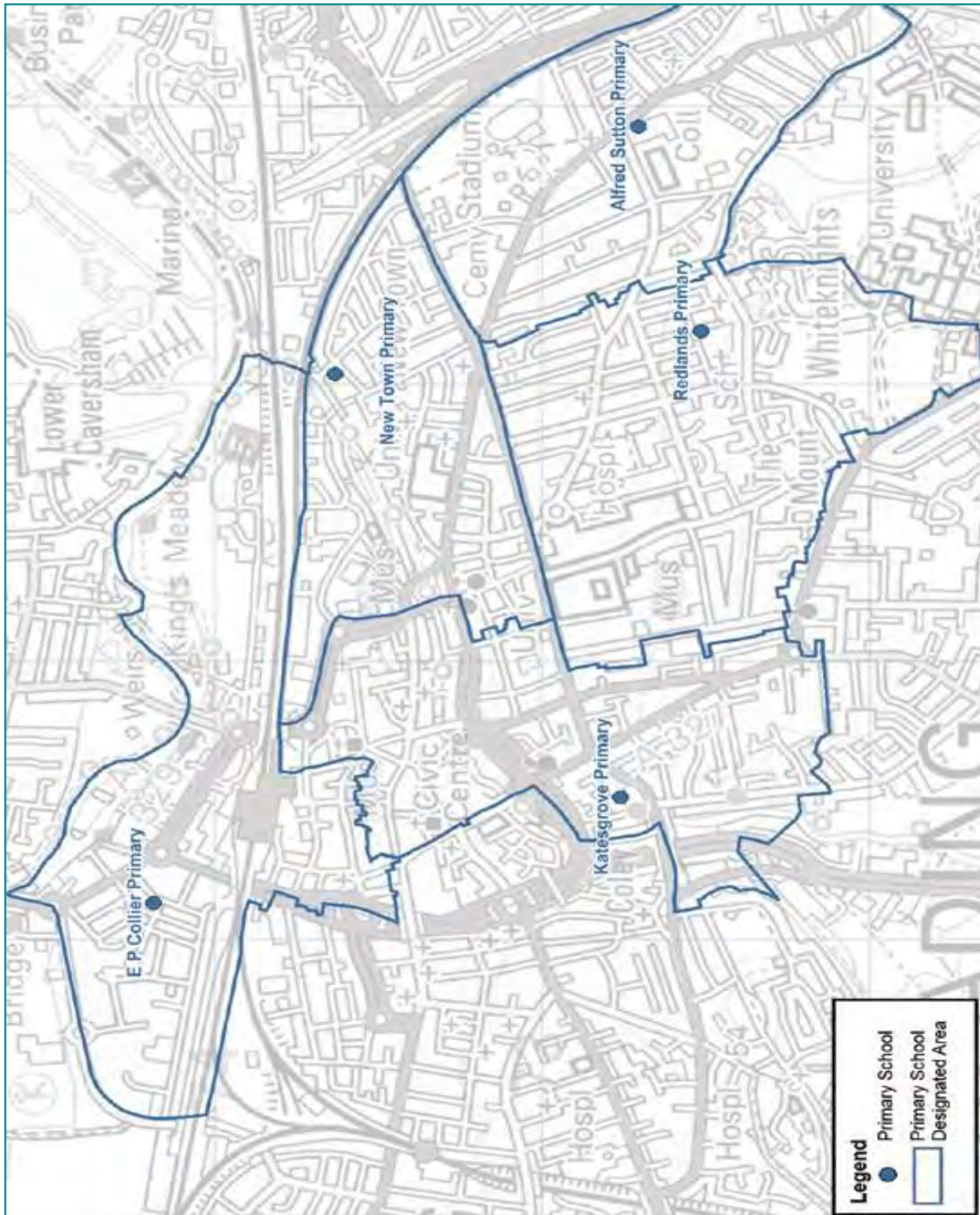
All Saints Junior School					A
August House, Brownlow Road, Reading, RG1 6NP		Headteacher:	Mrs Susannah Daniel		
Telephone:	0118 939 3362	<a href="http://www.allsaintsjuniorschoolreading.co.uk">www.allsaintsjuniorschoolreading.co.uk</a>			
Age range:	7-11	Admission number:	25		
School day:	8.40am – 3.10pm	DfE NO:	2002		
Breakfast club:	No	After school club:	No	Nursery:	No

Geoffrey Field Junior School					C
Exbourne Road, Reading, RG2 8RH		Headteacher:	Ms Rebecca Brown		
Telephone:	0118 937 5475	<a href="http://www.geoffreyfieldjuniorschool.co.uk">www.geoffreyfieldjuniorschool.co.uk</a>			
Age range:	7-11	Admission number:	90		
School day:	8.40am – 3.00pm	DfE NO:	2007		
Breakfast club:	Yes	After school club:	Yes	Nursery:	No

## School maps

The following maps show the catchment area for the community primary/infant schools in Reading and include any schools who consider 'catchment' within their oversubscription criteria.

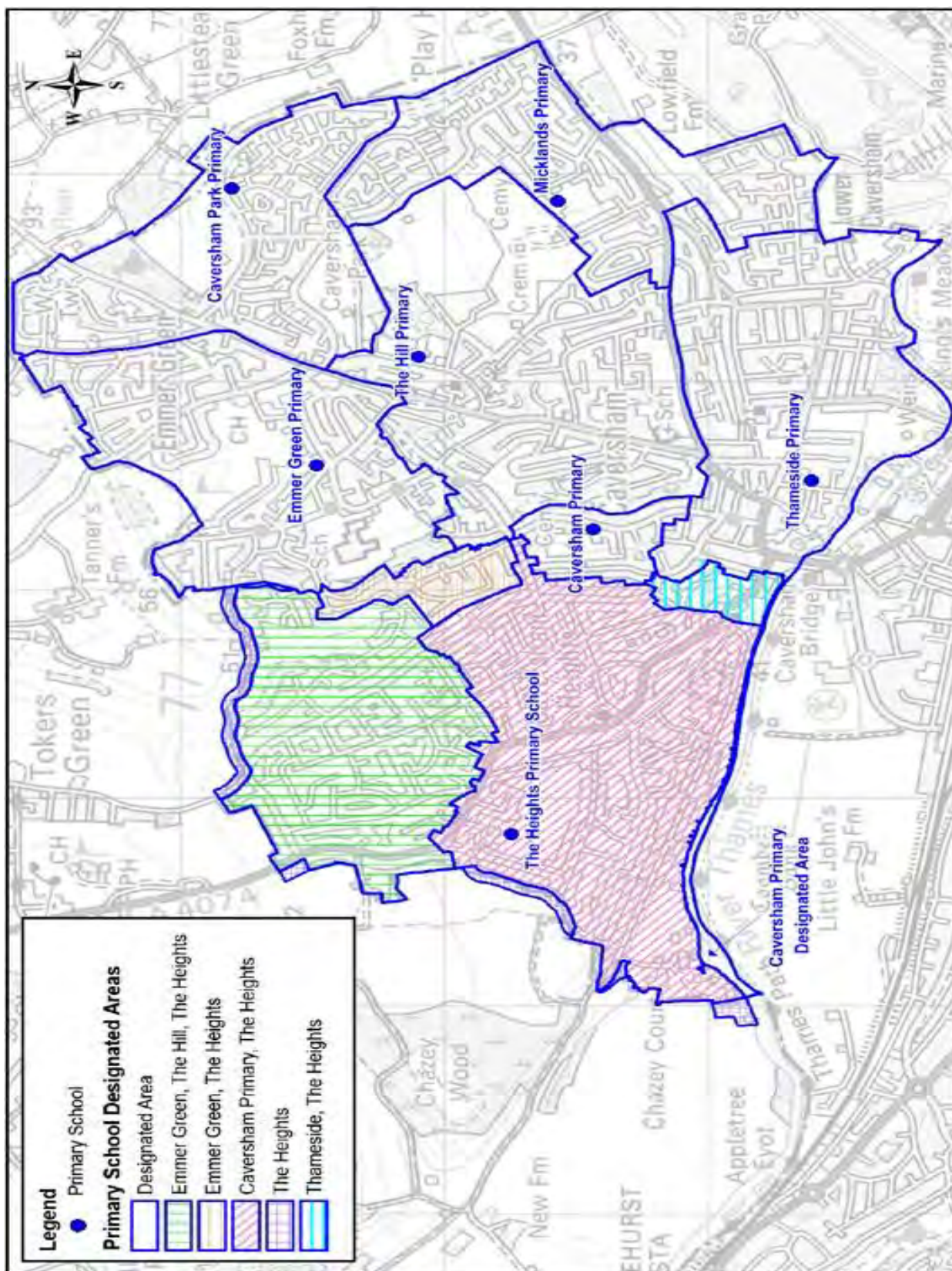
### Central and East Reading Primary Schools



© Crown copyright and database rights 2018 Ordnance Survey 100019672

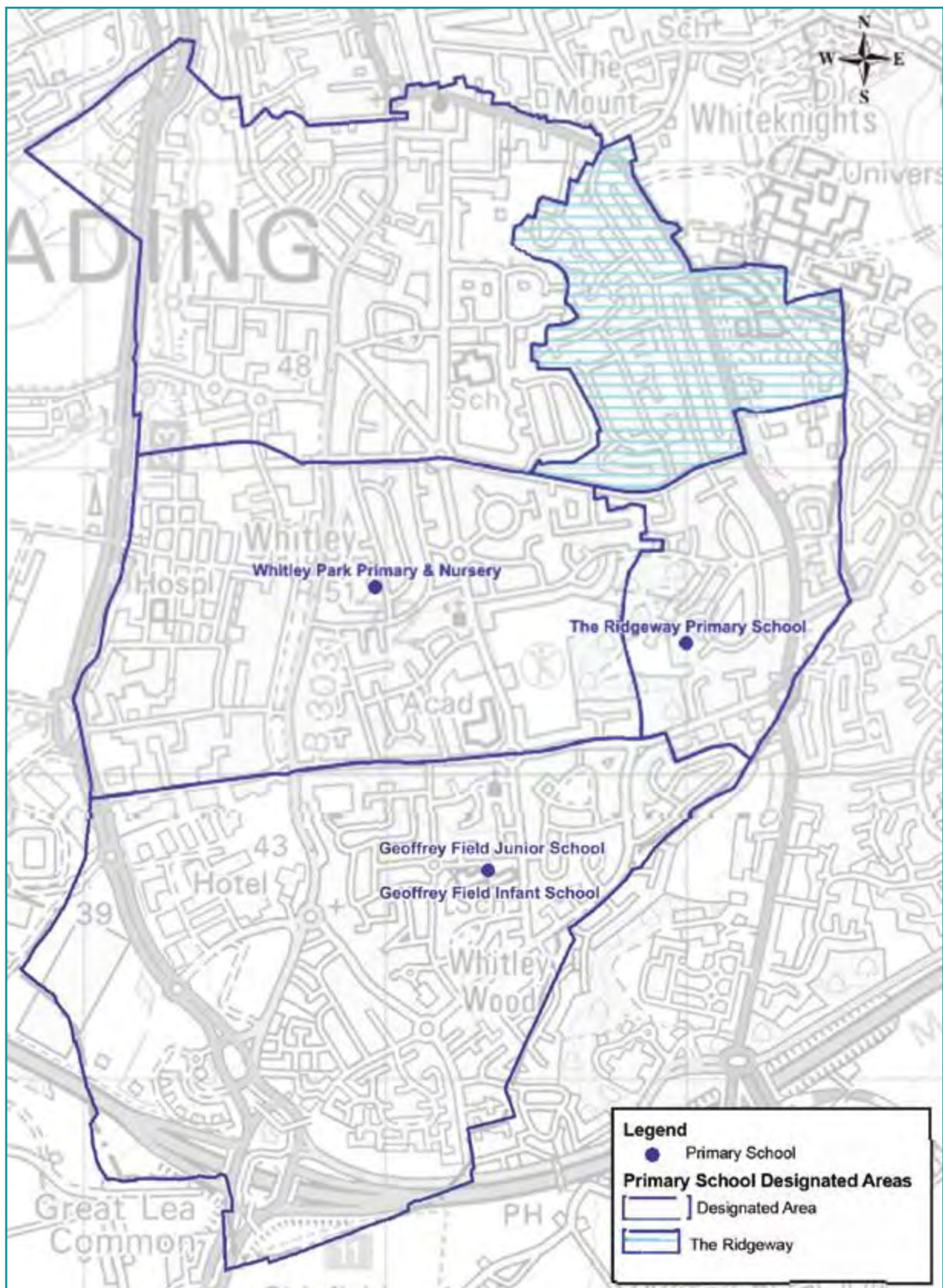


## North Reading Primary Schools





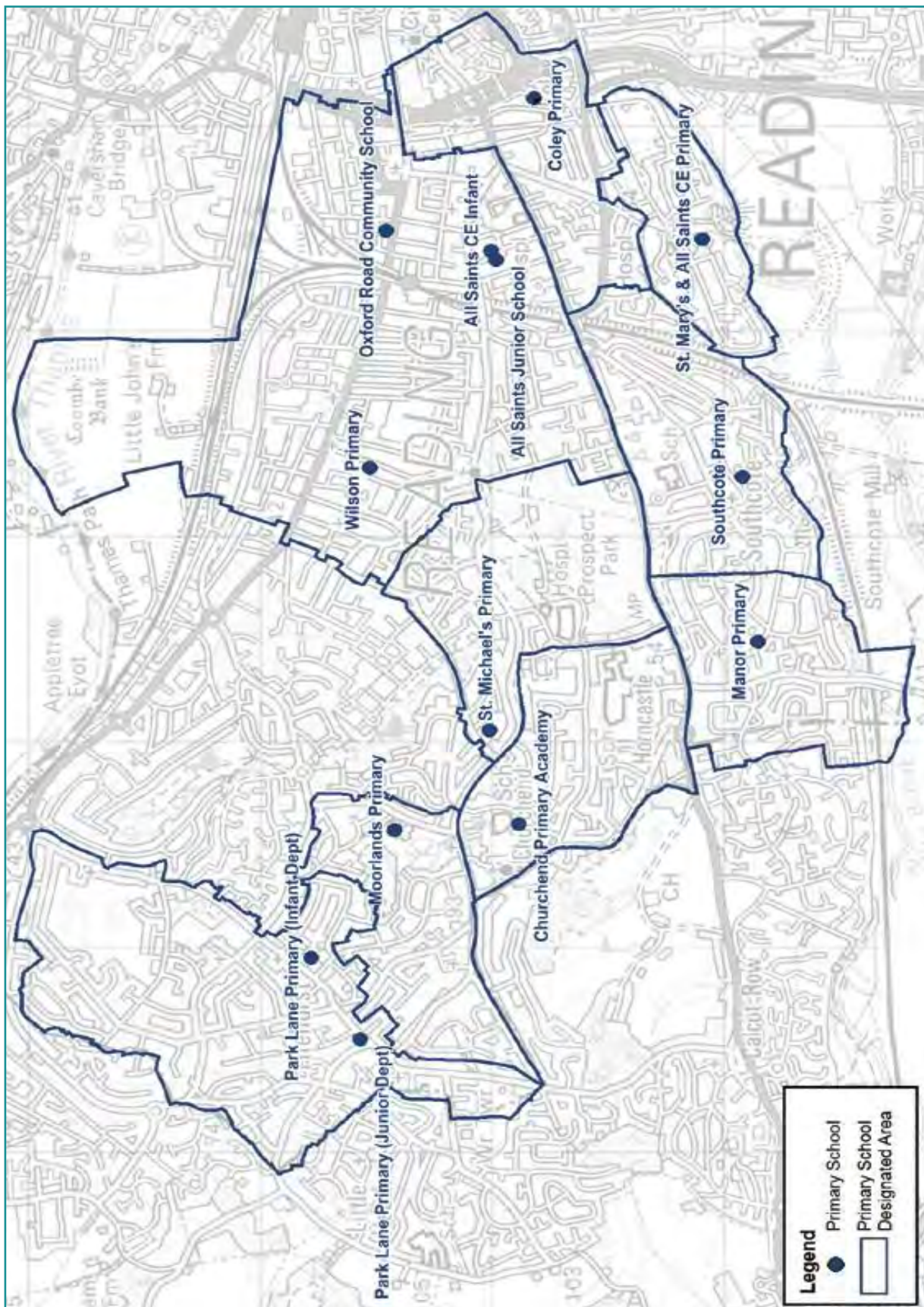
## South Reading Primary Schools



© Crown copyright and database rights 2018 Ordnance Survey 100019672



## West Reading Primary Schools

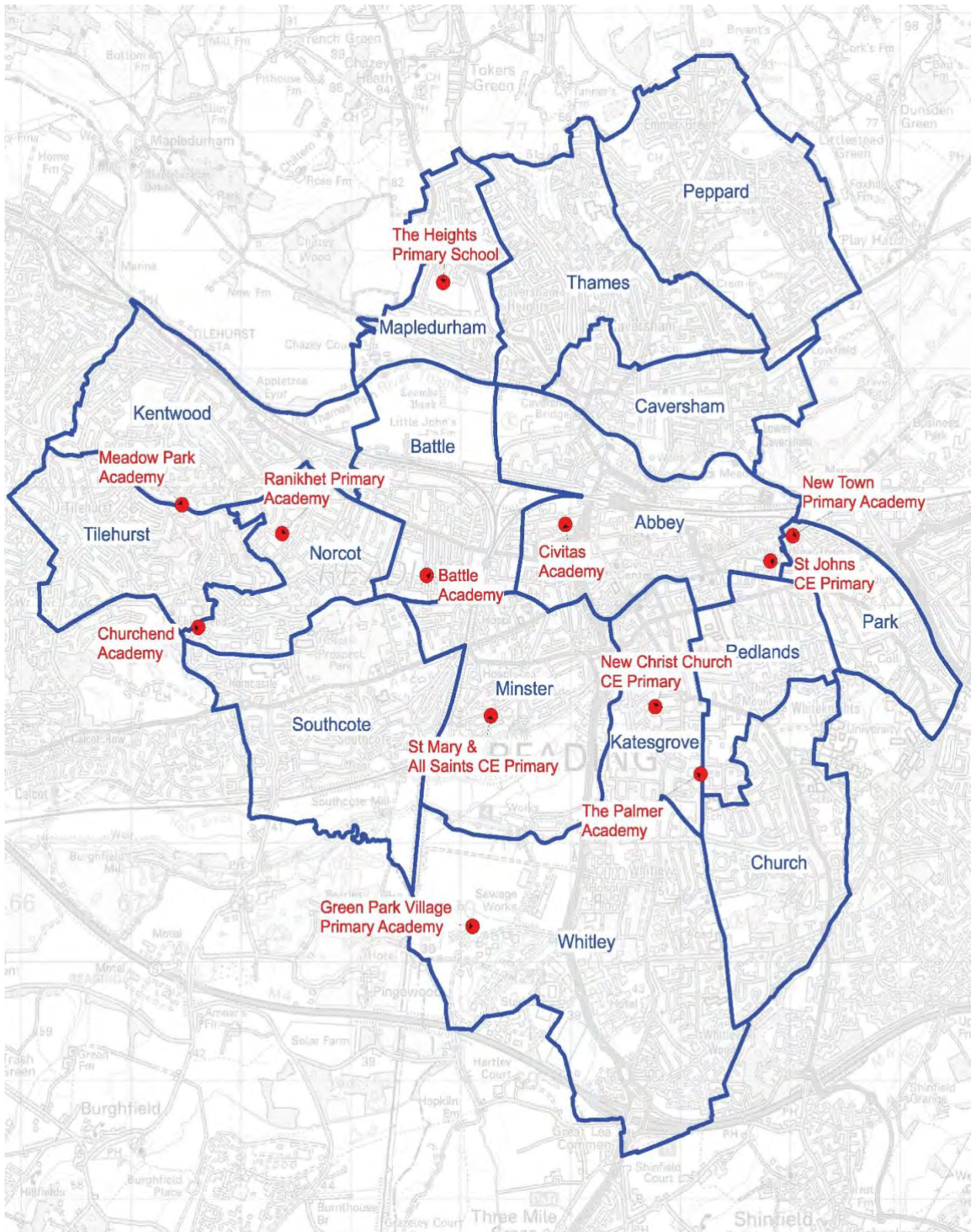


© Crown copyright and database rights 2018 Ordnance Survey 100019672



## Academies

This map shows academies in Reading in relation to the borough wards.

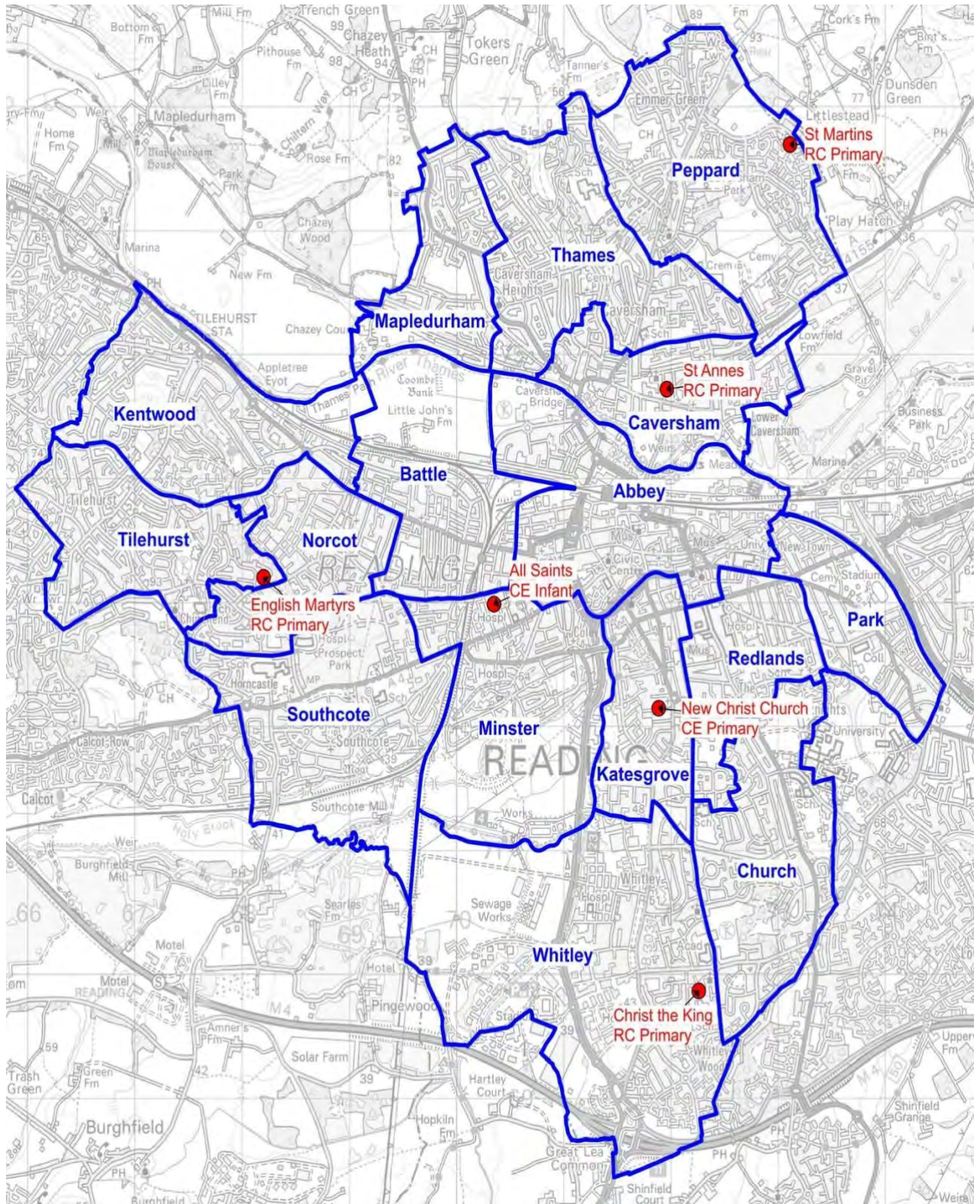


© Crown copyright and database rights 2018 Ordnance Survey 100019672



## VA Schools

This map shows VA schools in Reading in relation to the borough wards.





## Community school's admissions policies

Community Infant and Primary Schools
Alfred Sutton Primary School
Caversham Park Primary School
Caversham Primary School
Coley Primary School
Emmer Green Primary School
E P Collier Primary School
Geoffrey Field Infant School
Katesgrove Primary School
Manor Primary School
Micklands Primary School
Moorlands Primary School
Oxford Road Primary School
Park Lane Primary School
Redlands Primary School
Southcote Primary School
St Michaels Primary School
Thameside Primary School
The Hill Primary School
The Ridgeway Primary School
Whitley Park Primary and Nursery School
Wilson Primary School

Reading Borough Council is the admission authority for all community primary/infant schools and Reading Borough Council policy will be used to allocate school places, which is managed by Brighter Futures for Children.

### Oversubscription criteria

Children with an Education, Health and Care Plan (EHCP) naming a community primary or infant school will be allocated a place above all other children.

The oversubscription criteria take no account of the parent's/carer's order of preference. Applications for each school named by the parents/carers will be ranked according to the criteria set out below if there are more applications than places available.

The oversubscription criteria take no account of the order of preference indicated by the parent/carer. The application for each community school named by the parent/carer will be considered and ranked according to the criteria below.

Category	Notes
1	A 'looked after child' or a child who was previously looked after but immediately after being looked after became subject to an adoption, child arrangements, or special guardianship order including those who appear [to the admission authority] to have been in state care outside of England and ceased to be in state care as a result of being adopted. A looked after child is a child who is (a) in the care of a local authority, or (b) being provided with accommodation by a local authority in the exercise of their social services functions (see the definition in Section 22(1) of the Children Act 1989).
2	Families who have strong medical or social grounds for their child's admission to a particular school.
3	Children whose permanent home address is in the catchment area of the school and have a sibling at the school at the time of application who is expected to be attending the school when the child is due to start school.
4	Children whose permanent home address is in the catchment area of the school.
5	Children whose permanent home address is not in the catchment area of the school but have a sibling at the school at the time of application who is expected to be attending the school when the child is due to start school.
6	Children in receipt of Early Years Pupil Premium (EYPP) at the time of application who attends the nursery unit at the school.
7	Other children.

### Priority within the oversubscription criteria

Within each of the above categories 1-5 and 7, priority will be given to children who are in receipt of the Early Years Pupil Premium (EYPP), Service Premium or Pupil Premium (PP) at the time of application. To be considered for these priorities, parents/carers will be required to complete a Supplementary Information Form which **must be endorsed by the child's current school or nursery** confirming that they receive Early Years Pupil Premium (EYPP), Service Premium or Pupil Premium (PP) for the child. This form must be completed and returned to the school admissions team prior to **1 February 2025** in order that this priority may be awarded on time for the routine admissions round. Any applications received later than this date will be awarded the priority after national offer day.

### Tiebreaker

If a school does not have enough places for all children in a particular category, places will be allocated to those living nearest the school. The distance is measured in miles as a straight line between the Ordnance Survey data point for the child's home address and the school, using Reading Borough Council digital mapping software. This distance is measured to three decimal places. In the rare event that it is not possible to decide between the applications of those pupils who have the same distance measurement, the place will be offered using random allocation. A member of Committee Services staff for Reading Borough Council will supervise the selection process.

**Please ensure you read the Reading Borough Council full admission policy which can be obtained from our website here: <https://brighterfuturesforchildren.org/for-parents-carers/schools/admissions-arrangements/>**

## Academies' admission policies

School	Page
Battle Primary Academy	65
Churchend Primary Academy	67
Civitas Academy	68
Green Park Village Primary Academy	69
Meadow Park Academy	70
New Christ Church CE Primary	71
New Town Primary School	72
Ranikhet Academy	73
St Johns CE Primary	74
St Mary & All Saints CE Primary School	76
The Heights Primary School	77
The Palmer Primary Academy	78

### Battle Primary Academy

Battle Primary Academy is a welcoming, caring school, where adults are committed to the education of our pupils. Our children are happy and positive about their school and talk with enthusiasm for their learning. Our staff are dedicated to providing high standards of education for all; where pupils are well prepared for the next stage of their education careers and are responsible contributors to society. The school was graded as 'Good' by Ofsted in May 2019.

#### Oversubscription criteria

All children whose Education, Health and Care (EHC) plans name the school will be admitted before any other places are allocated.

If the school is not oversubscribed, all applicants will be offered a place.

In the event that the school receives more applications than the number of places it has available, places will be given to those children who meet any of the criteria set out below, in order until all places are filled.

Category	
1	Highest priority will be given to looked after children and all previously looked after children who apply for a place at the school.
2	Priority will next be given to children on the basis of exceptional social or medical need that can only be provided by Battle Primary Academy rather than any other school. The school requires supporting evidence if you are making an application on the basis of social or medical need.
3	Priority will next be given to children of staff at the school, in either of the following circumstances: a) The member of staff has been employed at the school for two or more years at the time at which the application for admission to the school is made, or b) The member of staff is recruited to fill a vacant post for which there is a demonstrable skill shortage
4	Priority will next be given to children who attend our school nursery.
5	Priority will next be given to children with siblings at the school. Siblings include step siblings, foster siblings, adopted siblings and other children living permanently at the same address. Priority will not be given to children with siblings who are former pupils of the school.
6	Priority will next be given to any other children.

### Tiebreaker

In the case of two or more applications that cannot be separated by the oversubscription criteria outlined above, the school will use the distance between the school and a child's home as a tie breaker to decide between applicants. Priority will be given to children who live closest to the school. Distance will be measured in a straight line from the child's home address to the school's front gates on Cranbury Road. A child's home address will be considered to be where he/she is resident for the majority of nights in a normal school week.

Where the distance between two children's homes and the school is the same, random allocation will be used to decide between them. This process will be independently verified.

**Please ensure you read the school's full admission policy which can be obtained from its website.**

## Churchend Primary Academy

At Churchend we are committed to ensuring that all our children will succeed at school and do well. Through a broad range of lessons and extracurricular activities, we expect to support children in discovering their particular strengths and passions. Whether that be maths, science, music, sport or a wealth of other activities they will be involved in, we intend to help children develop interests and skills that will remain with them throughout their lives.

### Oversubscription criteria

The following oversubscription criteria to determine admissions.

Children with a statement of special educational needs / Education, Health and Care Plan (EHCP) that names the school will be allocated a place above all other applicants.

Category	
1	Looked after children in the care of a local authority or children who were looked after but ceased to be so because they were adopted or be (to a child arrangement order or special guardianship order) immediately after they had been looked after. Provided appropriate evidence is submitted, please see note 1 in schools full policy. A 'looked after child' or a child who was previously looked after but immediately after being looked after became subject to an adoption, child arrangements, or special guardianship order <sup>91</sup> , including those who appear [to the admission authority] to have been in state care outside of England and ceased to be in state care as a result of being adopted. A looked after child is a child who is (a) in the care of a local authority, or (b) being provided with accommodation by a local authority in the exercise of their social services functions (see the definition in Section 22(1) of the Children Act 1989).
2	Children who have strong medical or social grounds for admission
3	Children of staff at the school where either or both of the following circumstances apply: a) where the member of staff has been employed at the school for two years or more at the time at which the application for admission to the school is made, and/or b) the member of staff is recruited to fill a vacant post for which there is a demonstrable skill shortage.
4	Children who have sibling(s) who will still be attending the school in September 2025.
5	Children whose permanent home address is in the designated area of the school.
6	Other children

### Tiebreaker

If a school does not have enough places for all applicants in a particular category, places will be allocated to those living nearest the school. Distance is measured as a straight line between the Ordnance Survey data point for the home address and the school using Reading Borough Council digital mapping. In the rare event that two or more children live at the same distance (measured as stated above) from school (including for example, flats within the same building) and there are fewer places available, random allocation will be used to decide which child will be allocated the remaining place(s). A member of staff from Committee Services Team for Reading Borough Council will supervise the selection process.

**Please ensure you read the school's full admission policy which can be obtained from its website.**

## Civitas Academy

Civitas Academy is a primary academy in Reading and is part of REAch2 Academy Trust.

Civitas Academy is a forward-thinking school located in state-of-the-art facilities in central Reading. The school opened in September 2015 and was rated as good in all areas in its first OFSTED inspection in September 2018. We are part of the Reach2 Reading Cluster, which also includes the Green Park Village, Ranikhet and The Palmer Academies. The school motto is 'Hand in hand we learn' and we are fully committed to working in partnership with families and our community to provide exceptional opportunities for learning. Our exciting and engaging curriculum is further enhanced through our programme of educational visits and extra-curricular clubs. Being part of Reach2 Academy Trust means that each child will have the opportunity to participate in the 11b411 promises. These promises have been designed to give the children 11 unique experiences before they leave primary school at 11 years old. We welcome visits and tours to the school. Please contact the school office to make an appointment.

### Oversubscription criteria

When the school is oversubscribed (that is, there are more applications than places available), after the admission of pupils with an Education, Health and Care Plan that names the school, priority for admission will be given to those children based on the criteria set out below, in the order shown:

Category	
1	Looked after children and previously looked after children
2	Children with siblings in the school
3	Children of school staff fulfilling a skills shortage role
4	All other children

### Tiebreaker

Where the number of applications exceeds the number of places available within any of the categories above, the order in which places will be allocated will be determined by reference to the distance between the child's home address (as defined by this policy) and the school, with those living nearer receiving higher priority.

Where it is not possible to separate two or more applications because the children concerned live an equal distance from the school, the order in which places are allocated will be determined by the drawing of lots in front of an independent witness.

**Please ensure you read the school's full admission policy which can be obtained from its website.**

## Green Park Village Primary Academy

Green Park Village Primary Academy is a brand-new school, which opened in September 2020 in state-of-the-art facilities, situated in the heart of the new Green Park Village development. It is part of REAch2, the largest primary multi-academy trust. We are part of the Reach2 Reading Cluster, which also includes the Civitas, Ranikhet and The Palmer Academies. Our experienced, warm and caring team, offer a safe, nurturing and creative learning environment, enabling us to ensure that our children are supported, challenged, inspired and motivated through a broad and balanced range of learning experiences and opportunities. We aim for our vision of 'enabling excellence for exceptional futures' to exude through our bespoke and innovative Enquiry Curriculum. Children enjoy our wide range of free after school clubs. We work with Go Beanies to offer wraparound care from 8am-5.45pm.

We would love to show you our stunning school and we welcome tours with the Head Teacher, Gemma Jackson. Please contact the school office by phone or email to arrange.

### Oversubscription criteria

When the school is oversubscribed (that is, there are more applications than places available), after the admission of pupils with an Education, Health and Care Plan that names the school, priority for admission will be given to those children based on the criteria set out below, in the order shown:

Category	
1	Looked after children and previously looked after children
2	Children with siblings in the school
3	Children of school staff fulfilling a skills shortage role
4	All other children

### Tiebreaker

Where the number of applications exceeds the number of places available within any of the categories above, the order in which places will be allocated will be determined by reference to the distance between the child's home address (as defined by this policy) and the school, with those living nearer receiving higher priority.

Where it is not possible to separate two or more applications because the children concerned live an equal distance from the school, the order in which places are allocated will be determined by the drawing of lots in front of an independent witness.

**Please ensure you read the school's full admission policy which can be obtained from its website.**



## Meadow Park Academy

Meadow Park Academy is a Good and Outstanding school with an imaginative curriculum aimed to enhance children’s understanding and experiences. We operate a restorative and therapeutic approach to behaviour and hold inclusivity at the heart of everything we do. The school opened its Forest School provision in September 2019 and is hoping to develop a STEM resource for the community in the future. As a school, our core values aim to develop the individual as a whole – mind, body and spirit, by celebrating each child’s unique skills and qualities and targeting personal development alongside achievement and progress. We encourage our pupils to be creative, take risks and build character in order to maximise achievement in all areas. In doing so, they develop a lifelong love of learning through nurture and adventure as well as the resilience to follow their own paths and contribute to our communities as responsible global citizens.

### Oversubscription criteria

If the school is oversubscribed, after the admission of pupils with an Education, Health and Care Plan (EHCP) where the school is named in the EHCP, priority for admission will be given to those children who meet the criteria set out below, in order:

Category	
1	Looked After Children and previously Looked After Children <sup>1</sup> , including those children who appear to have been in state care outside of England and ceased to be in state care as a result of being adopted.
2	Children with a sibling attending the school at the time of application. In the event of there being more siblings than there are remaining places in a year group, it is possible that a sibling under these circumstances would not be offered a place.
3	Children of any member of staff at the school, in either of the following circumstances: a) The member of staff has been employed at the school for two or more years at the time at which the application for admission to the school is made, or b) The member of staff is recruited to fill a vacant post for which there is a demonstrable skill shortage.
4	Other children by distance from the school, with priority for admission given to children who live nearest to the school.

### Tiebreaker

The oversubscription criteria are listed in the order we apply them. If it is necessary to distinguish between more than one applicant in any criteria, the next criteria will be applied until the tie-breaker is used. In the case of two or more applications that cannot be separated by the oversubscription criteria outlined above, the school will use random allocation as a tie breaker to decide between applicants. This process will be independently verified by someone who does not work at the school.

**Please ensure you read the school’s full admission policy which can be obtained from its website.**

## New Christ Church, Church of England Primary

We, at New Christ Church School, pride ourselves in being a warm and welcoming 'family' where children and adults can flourish. We have a strong supportive and caring ethos. We aim to provide a nurturing environment for children of all backgrounds, faiths and abilities and pride ourselves in building aspirations for all our children. We base our values on Christian values, where all individuals are treated with respect, fairness and equity. We celebrate our long history of working with our families, our community and strive for excellence in all that we do.

In January 2022 we joined the Oxford Diocesan Trust Academy where we work closely to ensure the best education for our children, working with other local schools and schools within the Oxford Diocese.

### Oversubscription criteria

In the event of there being a greater demand for admission than there are places available, then children with an Education, Health and Care Plan (EHCP) naming New Christ Church CE School have the highest priority.

The oversubscription criteria take no account of the parents'/carers' order of preference and applications for each school named by the parents/carers will be ranked according to the criteria set out below if there are more applications than places available.

Category	
1	Looked-after children and children who were previously looked after, including those children who appear to have been in state care outside England, but ceased to be so as a result of being adopted.
2	Families who have exceptional medical or social needs that make it essential that their child attends New Christ Church CE Primary School rather than any other. These needs must be fully supported by written evidence from the appropriate professional person involved with the family.
3	Children with a sibling on the roll of the school at the time of application and who is expected still to be in attendance in the year in which they enter and who has a normal home address within the ecclesiastical parish of Christ Church, Reading.
4	Children with a sibling already in the school (but who live outside of the ecclesiastical parish of Christ Church, Reading) at the time of application and who is expected still to be in attendance in the year in which they enter.
5	Children with a normal home address within the ecclesiastical parish of Christ Church, Reading.
6	Other Children

### Tiebreaker

If a school does not have enough places for all children in a particular category, places will be allocated to those living nearest the school. The distance is measured in miles as a straight line between the Ordnance Survey data point for the child's home address and the school using Reading Borough Council digital mapping software. This distance is measured to three decimal places. In the rare event that it is not possible to decide between the applications of those pupils who have the same distance measurement then the place will be offered using random allocation.

**Please ensure you read the school's full admission policy which can be obtained from its website.**

## New Town Primary School

New Town Primary School is a very special place where we believe all of our children, whatever their background, have a right to a fantastic education and to shine as young people. Our school is proud to be a safe haven for the children of New Town, and we are very lucky to be located next to the canal in beautiful Victorian buildings, filled with light, space and love and where opportunities abound. Throughout our school we develop our children academically, behaviourally and spiritually, and we are proud of the diversity and togetherness of our children.

New Town is blessed to have a very wide range of children and families from different nationalities, and we celebrate and cherish our variety of faiths and personal experiences throughout our school. We have a strong commitment to excellent pastoral care, and nurture the brilliance we see in every one of our pupils. We keep love, kindness and inclusivity at the heart of our leadership, teaching and communication with all. In January 2022 we joined the Oxford Diocesan Trust Academy where we work closely to ensure the best education for our children, working with other local schools and schools within the Oxford Diocese.

### Oversubscription criteria

Category	
1	Looked after children in the care of a local authority or children who were looked after but ceased to be so because they were adopted (or became subject to a child arrangement order or special guardianship order) immediately after they had been looked after.
2	Children who have strong medical or social grounds for admission.
3	Children whose permanent home address is in the catchment area of the school and have a sibling at the school at the time of application who is expected to be attending the school when the child is due to start school.
4	Children whose permanent home address is in the catchment area of the school.
5	Children whose permanent home address is not in the catchment area of the school but have a sibling at the school at the time of application who is expected to be attending the school when the child is due to start school.
6	Children in receipt of Early Years Pupil Premium (EYPP) at the time of application who attends the nursery unit at the school.
7	Other children.

### Priority within the oversubscription criteria

Within each of the above categories 1-5 and 7, priority will be given to children who are in receipt of the Early Years Pupil Premium (EYPP). To be considered for this priority, parents/carers must tick the relevant box on their child's application and, by doing so, permit the Reading School Admissions team to verify the conditions have been met for the priority to be applied.

### Tiebreaker

If a school does not have enough places for all children in a particular category, places will be allocated to those living nearest the school. A member of Committee Services staff for Reading Borough Council will supervise the selection process.

**Please ensure you read the school's full admission policy which can be obtained from its website.**

## Ranikhet Academy

Ranikhet is a two-form entry school serving the children and families of Tilehurst, Reading and the surrounding area. We are part of the Reach2 Reading Cluster, which also includes the Civitas, Green Park Village and The Palmer Academies. We are a highly inclusive school where everyone is equally valued. Our teams work closely with our community to bring about the best possible provision for our children, ensuring they are 'Proud to Belong'.

### Oversubscription criteria

When the school is oversubscribed (that is, there are more applications than places available), after the admission of pupils with an Education, Health and Care Plan that names the school, priority for admission will be given to those children based on the criteria set out below, in the order shown:

Category	
1	Looked after children and previously looked after children
2	Children with siblings in the school
3	Children of school staff fulfilling a skills shortage role
4	All other children

### Tiebreaker

Where the number of applications exceeds the number of places available within any of the categories above, the order in which places will be allocated will be determined by reference to the distance between the child's home address (as defined by this policy) and the school, with those living nearer receiving higher priority.

Where it is not possible to separate two or more applications because the children concerned live an equal distance from the school, the order in which places are allocated will be determined by the drawing of lots in front of an independent witness.

**Please ensure you read the school's full admission policy which can be obtained from its website.**

## St John’s Church of England Primary School

The principal aims of the Admission Policy are to maintain the characteristics of a church foundation school while meeting the needs of the wider community. We promote social inclusion by welcoming all members of the community regardless of their faith or none, gender, disability or ethnic origin. We value diversity and the contribution that each individual and every group make to the school and wider community. We offer a broad and balanced curriculum, which is committed to the spiritual, moral, social and cultural development of the child within the framework of the national curriculum.

*Our vision is to be an aspirational and supportive church school community, working together to wonder, trust and achieve. Striving to recognise life’s rich opportunities, while developing talented lifelong learners, through respect, empathy, hope, trust and wonder.*

In January 2022 we joined the Oxford Diocesan Trust Academy where we work closely to ensure the best education for our children, working with other local schools and schools within the Oxford Diocese.

### Oversubscription criteria

Children with an Education, Health and Care (EHC) plan naming St John’s C of E Primary School will always be offered places. If there is greater demand for admission than there are places available, the following criteria will be applied in the order set out below:

Category	
1	Looked-after children and children who were previously looked after, including those children who appear to have been in state care outside England but ceased to be so as a result of being adopted
2	Families who have exceptional medical or social needs that make it essential that their child attends St John’s Church of England Primary School rather than any other. These needs must be fully supported by written evidence from the appropriate professional person involved with the family.
3	Children with a sibling on the roll of the school at the time of application or whose parent has accepted an offer of a place at the school and who is expected still to be in attendance at the time of entry to the school. (Attendance at St John’s Primary School’s Nursery class does not qualify an older sibling under this criteria).
4	Children living within 1 mile of the school. The straight-line distance used to determine proximity of the home to the school will be measured by Brighter Futures for Children’s (Reading Admissions) Geographical Information System.
5	Children, one of whose parents/carers regularly worships at St John’s and St Stephen’s Church, Reading or Wycliffe Baptist Church, Kings Road, Reading.
6	Children, one of whose parents/carers, regularly worships at a Christian church other than St John’s & St Stephen’s or Wycliffe Baptist Church that is a member of ‘Churches Together in Britain and Ireland’ or a member of the Evangelical Alliance.
7	Other children.

### Priority within the oversubscription criteria

Families who have exceptional medical or social needs that make it essential that their child attends St John’s CofE Primary School rather than any other will then be given priority within criterion 2-5. These needs must be fully supported by written evidence from the appropriate professional person involved with the family.

### **Tiebreaker**

Proximity of the child's home, as measured by the straight line distance between the home and the school with those living nearer being accorded the higher priority, will serve to differentiate between children in criteria 1 to 5 should the need arise. In the event that two distance measurements are identical, the school will use random allocation to decide which child should be offered the place. The process will be conducted in the presence of a person independent of the school.

**Please ensure you read the school's full admission policy which can be obtained from its website.**

## St Mary & All Saints CE Academy

St Mary & All Saints is a happy and stimulating place to work and to learn. You will see that we have beautiful, spacious buildings, wide corridors which we can use to display the lovely work our pupils produce, and extensive landscaped grounds which are the envy of schools around us. Our children are happy and motivated to learn, and the school is well resourced and a bright and vibrant learning environment. We have recently given our outside areas a facelift, so that they too reflect the importance we give to the whole environment.

### Oversubscription criteria

A child who has a statement of special educational need or an Education, Health and Care Plan is required to be admitted to the school named on the child's statement.

Category	
1	A "looked after child" or a child who was previously looked after but immediately after being looked after became subject to an adoption, child arrangements, or special guardianship order (90) including those who appear (to the admission authority) to have been in state care outside of England and ceased to be in state care as a result of being adopted. A looked after child is a child who is (a) in the care of a local authority, or (b) being provided with accommodation by a local authority in the exercise of their social services function (see the definition in Section 22(1) of the Children Act 1989)
2	Children who have, one or both parents/carers, exceptional medical or social needs that make it essential that the children attend St Mary and All Saints School rather than any other. These needs must be fully supported by written evidence from the appropriate professional person involved with the family
3	Children living in the designated area (as agreed with Reading School Admissions Team) who have a sibling or siblings either a) on roll at the school at the time of the application or b) whose parent/carer has accepted an offer of a place for the sibling(s) at the school and, in either case, c) who is or are expected to be still on the roll at the time of the applicant's entry to the school.
4	Children who live in the designated area.
5	Children who do not live in the designated area, but who have a sibling or siblings either: a) On the role of the school at the time of the application or b) Whose parent/carer has accepted an offer of a place for the sibling(s) at the school and in either case c) Who is or are expected to be still on the roll at the time of the applicant's entry to the school.
6	Children who live outside the designated area and who do not meet any of the criteria set out above

### Tiebreaker

In any case, where two or more children rank equally under any of the criteria above and there is only one place available, the tie breaker is the distance measured in a straight line between the school and the child's home. In the event that two distance measurements are identical, the school will use random allocation.

**Please ensure you read the school's full admission policy which can be obtained from its website.**



## The Heights

The Heights Primary School is a mainstream primary academy which opened in September 2014 in response to Reading Borough Council's school place consultation.

The school moved to its permanent location at Mapledurham Playing Fields (at the heart of the catchment area) during the summer of 2021. In December 2023 The Heights joined BPET multi academy trust. Following the original ethos of the Founding Trust Members, The Heights promotes sustainable travel to and from school and parents will be strongly encouraged to support the school's travel plan.

The Heights has a vision to ensure all children ASPIRE: Achieve Success while Providing Individual Responsibility and Excellence. The Heights aims to be an innovative and dynamic place to stimulate young minds and ensure the best quality teaching staff and resources are used to achieve ambitious targets.

### Oversubscription criteria

If there are more applications than places available, priority for places will be given according to the following over-subscription criteria.

Please note that children with a statement of special educational needs (SEN) or Education, Health & Care (EHC) plan that names The Heights Primary School will be allocated a place above all other applicants.

Category	
1	Looked after Children or previously Looked after Children
2	Children who have strong medical or social grounds for admission to The Heights School in particular.
3	Children whose permanent home address is in the catchment area of the school and have a sibling who is expected to be attending the school when the child starts school.
4	Children who have a sibling who was attending the school on 3rd October 2014 (the first national school census day for 2014/2015) and have a sibling (not necessarily the same sibling) who is expected to be attending the school when the child starts school.
5	Children whose permanent home address is in the catchment area of the school.
6	Children whose permanent home address is not in the catchment area of the school but have a sibling who is expected to be attending the school when the child starts school.
7	Other children.

### Tiebreaker

If it is not possible to offer a place to all children in a particular category, places will be allocated to those living nearest to the data point of the area, as defined in the above Catchment Area section. The distance is measured as a straight line between the Ordnance Survey data point for the child's home address and the identified data point above. In the rare event that it is not possible to decide between the applications of those pupils who have the same distance measurement then the place will be offered using random allocation.

**Please ensure you read the school's full admission policy which can be obtained from its website.**

## The Palmer Academy

The Palmer Academy is a two-form entry school for children aged 3-11 serving the children and families of Whitley, Reading, and the surrounding area. We are part of the Reach2 Reading Cluster, which also includes the Civitas, Green Park Village and Ranikhet Academies. Children at The Palmer Academy develop enquiring minds through discovering new concepts and challenging their own ideas. We are an inclusive school, working with other schools, providers and professionals in supporting our children to find success.

### Oversubscription criteria

When the school is oversubscribed (that is, there are more applications than places available), after the admission of pupils with an Education, Health and Care Plan that names the school, priority for admission will be given to those children based on the criteria set out below, in the order shown:

Category	
1	Looked after children and previously looked after children
2	Children with siblings in the school
3	Children of school staff fulfilling a skills shortage role
4	All other children

### Tiebreaker

Where the number of applications exceeds the number of places available within any of the categories above, the order in which places will be allocated will be determined by reference to the distance between the child's home address (as defined by this policy) and the school, with those living nearer receiving higher priority.

A member of staff from the Committee Services Team for Reading Borough Council will supervise the selection process.

**Please ensure you read the school's full admission policy which can be obtained from its website.**

## Voluntary-aided schools' admissions policies

School	Page
All Saints CE Infant	79
Christ the King RC Primary	80
English Martyrs RC Primary	81
St Anne's RC Primary	82
St Martin's RC Primary	83

### All Saints CE Infant

All Saints Infants is a safe, welcoming, fun and forward-looking school where a culture of high expectations, creativity and hard work enable our children to become confident, happy and caring. We encourage our children to achieve their full potential through an exciting and innovative curriculum. We have mutual respect and care for our children, their families, all members of our community and each other. Our purpose is to present to the vibrant local community a happy school which is a living example of Christian values and principles. We welcome people from all faiths and cultures to become part of the 'caring family' of our school. Our school vision of learning with love and laughter underpins all that we do.

### Oversubscription criteria

Children with a Statement of Special Educational Need or with an Education, Health and Care Plan (EHCP) naming All Saints Infants School will always be offered places. If there is greater demand for admission than there are places available, the following criteria will be applied in the order set out below:

Category	
1	Looked after children and children who were previously looked after, but ceased to be so because, immediately after being looked after, they became subject to an adoption, child arrangements or special guardianship order.
2	Families who have exceptional medical or social needs that make it essential that their child attends All Saints Infants School rather than any other. These needs must be fully supported by written evidence from the appropriate professional person involved with the family.
3	Children with a sibling on the roll of All Saints Infants or All Saints Junior School at the time of application and who is expected to be in attendance at the time of entry.
4	Children who live nearest to the school

### Tiebreaker

Proximity of the child's home, as measured by the straight-line distance between the home and the school with those living nearer being accorded the higher priority, will serve to differentiate between children in criteria 1 to 4 should the need arise. In the event that two distance measurements are identical, the school will use random allocation to decide which child should be offered the place. The process will be conducted in the presence of a person independent of the school.

**Please ensure you read the school's full admission policy which can be obtained from its website.**

## Christ The King RC Primary

Christ the King is a voluntary-aided Catholic primary school provided by the Roman Catholic Diocese of Portsmouth. We base our work on the Gospel values of freedom and charity. We are proud of our children and their achievements; we are proud of our academic standards and the selfless commitment of our staff; we are proud of the warm and strong community that we serve, and proud that we serve the whole of that community. We believe in working closely with parents, parishioners and the wider community to provide the very best for our children spiritually, morally and academically, but individual parents must take the decision as to whether what we offer is right for their children.

### Oversubscription criteria

If there are more applications than places available, then they will be prioritised according to the following criteria. Children with a Statement of Special Educational Needs or an Education Health and Care Plan in which Christ the King school is named will take priority over all other applicants.

Category	
1	Catholic children in care of a local authority and Catholic children who have previously been in care of a local authority
2	Catholic children
3	Other children in care of a Local Authority and other children who have previously been in care of a Local Authority
4	Children who will have a sibling in the school at the time of admission
4	Other applicants

### Tiebreaker

If there is over subscription in any of the above categories, the Governing Body will give priority to those living closest to the school. This will be determined by the shortest straight line distance measured from the data point of the home and the school using Reading Borough Council's digital mapping service. In the unlikely event of the distance between two children's homes and the school being the same, random allocation will be used, which will be supervised by the local authority.

**Please ensure you read the school's full admission policy which can be obtained from its website.**

## English Martyrs RC Primary

English Martyrs is a Catholic voluntary-aided school, based in extensive wooded grounds which provide ideal opportunities for outside learning. We are proud to have a very diverse and inclusive community that welcomes families of all faiths and no faith, from Tilehurst, west and central Reading. We have a Breakfast Club and After School Club, which means we can offer wrap-around care from 7.30am to 6pm. In addition, we have a 26-place nursery, accepting 30-hour funding (separate application required). We welcome applications from everyone.

### Oversubscription criteria

All applications which have named English Martyrs on the Common Application Form will be considered equally according to the criteria below.

Should there be more applications than places available, the Governing Body will offer places, up to the Published Admissions Number, in the following category order:

Category	
1	Baptised Catholic 'looked after children' and previously 'looked after children'.
2	Baptised Catholic children with a sibling attending the school at the time of the proposed admission of the applicant.
3	Other Baptised Catholic children.
4	Other 'looked after children' and previously 'looked after children'.
5	Other children with a sibling attending the school at the time of the proposed admission of the applicant.
6	Children with a Baptised Catholic parent/carer.
7	Children of families who are members of other Christian denominations.
8	Children of other religious faiths.
9	Any other children

Priority in any oversubscribed category will be given to those children living nearest the school.

### Tiebreaker

In the event that siblings with a different date of birth but in the same year group are split by the over-subscription the following will apply:

During Key Stage 1, when admission of all the siblings would take the Published Admission Number over 60 (up to and including Year 2) – one child will be offered a place, selected by random selection which will be made in the presence of a representative of Reading Borough Council's Committee Services.

In the unlikely event of the distance between two children's homes and the school being the same, random allocation will be used, which will be supervised by the local authority.

**Please ensure you read the school's full admission policy which can be obtained from its website.**

## St Anne’s RC Primary

The children of St Anne's are known for their smiles, generosity, and enthusiasm for learning. Our school in Caversham welcomes children of all faiths and none, supporting each pupil to achieve their best. We believe children learn best when they feel safe, loved, and challenged, so our teachers provide excellent pastoral care and engaging learning experiences.

Our curriculum is designed to provide a comprehensive education starting from EYFS, with a strong emphasis on specialist teaching. Our pupils benefit from lessons led by expert teachers in Music, PE, and Drama. This approach ensures that children receive high-quality education not only in core academic subjects but also in the arts and physical education, fostering well-rounded development.

We currently have 160 children in 7-year groups and a 21-place nursery. Children join our Reception class at age five and move on to secondary school at age 11. School hours are from 8:40 am to 3:25 pm, and we offer a Before and After School Club from 8:00 am to 6:00 pm.

### Oversubscription criteria

Children with an Education, Health and Care (EHC) Plan that names the school **MUST** be admitted. This will reduce the number of places available to applicants. Should there be more applications than places available, the Governing Body will offer places, up to the Published Admissions Number, in the following category order:

Category	
1	Baptised Catholic children who are looked after or previously looked after.
2	Baptised Catholic children living in the parish of Our Lady and St Anne who have a brother or sister attending St Anne’s Catholic Primary School at the time of admission.
3	Baptised Catholic children living in the parish of Our Lady and St Anne.
4	Other Baptised Catholic children who have a brother or sister attending St Anne’s Catholic Primary School at the time of admission.
5	Other Baptised Catholic children.
6	Non-Catholic children who are looked after or previously looked after.
7	Non-Catholic children who have a brother or sister attending St Anne’s Catholic Primary School at the time of admission.
8	Non-Catholic children.

### Tiebreaker

In the unlikely event of the distance between two children’s homes and the school being the same, on behalf of the Governing Body, random allocation will be used, which will be supervised by the local authority.

**Please ensure you read the school’s full admission policy which can be obtained from its website.**

## St Martin's RC Primary

St. Martin's is a small school with a strong sense of community. We have a Catholic ethos but welcome children of all faiths and no faith. We emphasise the education of the whole child and our pupils are encouraged to develop self-confidence and a sense of responsibility for themselves, others and the world around them. We value academic achievement, but we also celebrate the wide range of talents our children bring to our school.

We offer a wide range of extra-curricular activities, including an award-winning Glee Club. Our children enjoy a well-stocked library, a large playground and a 'copse' which is regularly used for outdoor learning. Our school day starts at 8.40am and finishes at 3.15pm. We have a wraparound provision Monday – Friday (7:30 – 5:45). If you are interested in your child joining us at St. Martin's, please call us to arrange a visit.

### Oversubscription criteria

Children with an Education, Health and Care (EHC) Plan that names the school **MUST** be admitted. This will reduce the number of places available to applicants. Should there be more applications than places available, the Governing Body will offer places, up to the Published Admissions Number, in the following category order:

Category	
1	Baptised Catholic children who are looked after or previously looked after.
2	Baptised Catholic children living in the parish of St Michael's who have a brother or sister attending St Martin's Primary School at the time of admission.
3	Baptised Catholic children living in the parish of St Michael's.
4	Other Baptised Catholic children who have a brother or sister attending St Martin's Primary School at the time of admission.
5	Other Baptised Catholic children.
6	Non-Catholic children who are looked after or previously looked after.
7	Non-Catholic children who have a brother or sister attending St Martin's Primary School at the time of admission.
8	Non-Catholic children.

### Tiebreaker

In the unlikely event of the distance between two children's homes and the school being the same, on behalf of the Governing Body, random allocation will be used, which will be supervised by the local authority.

**Please ensure you read the school's full admission policy which can be obtained from its website.**



## Junior schools' admissions policies

School	Page
All Saints Junior School	84
Geoffrey Field Junior School	85

### All Saints Junior School

All Saints Junior School, Reading, is a school which thrives at the heart of its local community, born out of a local aspiration for a feeder school to All Saints Infant School.

Established as one of the first free schools in the country in September 2011, the school was founded through a partnership with local families and CfBT Schools Trust, a Reading-based education charity.

#### Oversubscription criteria

If the school is oversubscribed, after the admission of pupils with an Education, Health and Care Plan (EHCP) where the school is named in the EHCP, priority for admission will be given to those children who meet the criteria set out below, in order:

Category	
1	Looked after children and previously looked after children, including those children who appear to have been in state care outside of England and ceased to be in state care as a result of being adopted
2	Children of staff at the school in either of the following circumstances: a) The member of staff has been employed at the school for two or more years at the time at which the application for admission to the school is made, or b) The member of staff is recruited to fill a vacant post for which there is a demonstrable skill shortage
3	Children who are attending All Saints Infant School, a named feeder school, at the time of application
4	Children with a sibling attending All Saints Infant or Junior School at the time of application
5	Other children by distance from the school.

#### Tiebreaker

The oversubscription criteria are listed in the order we apply them. with priority for admission given to children who live nearest to the school. If it is necessary to distinguish between more than one applicant in any criteria, the next criteria will be applied until the tie-breaker is used. In the case of two or more applications that cannot be separated by the oversubscription criteria outlined above, the school will use random allocation as a tie breaker to decide between applicants. This process will be independently verified by someone who does not work at the school or the local authority.

**Please ensure you read the school's full admission policy which can be obtained from its website.**

## Geoffrey Field Junior School

### Oversubscription criteria

Category	
1	A 'looked after child' or a child who was previously looked after but immediately after being looked after became subject to an adoption, child arrangements, or special guardianship order including those who appear [to the admission authority] to have been in state care outside of England and ceased to be in state care as a result of being adopted. A looked after child is a child who is (a) in the care of a local authority, or (b) being provided with accommodation by a local authority in the exercise of their social services functions (see the definition in Section 22(1) of the Children Act 1989).
2	Families who have strong medical or social grounds for their child's admission to a particular school.
3	Children whose permanent home address is in the catchment area of the school and have a sibling at the school, or Geoffrey Field Infant School at the time of application who is expected to be attending the school when the child is due to start school.
4	Children whose permanent home address is in the catchment area of the school.
5	Children whose permanent home address is not in the catchment area of the school but have a sibling at the school or Geoffrey Field Infant School at the time of application, who is expected to be attending the school when the is due to start school.
6	Children who are attending Geoffrey Field Infant School at the time of application.
7	Other Children.

### Priority within the oversubscription criteria

Within each of the above categories 1-5 and 7, priority will be given to children who are in receipt of the Early Years Pupil Premium (EYPP), Service Premium or Pupil Premium (PP) at the time of application. To be considered for these priorities, parents/carers will be required to complete a Supplementary Information Form which **must be endorsed by the child's current school or nursery** confirming that they receive Early Years Pupil Premium (EYPP), Service Premium or Pupil Premium (PP) for the child. This form must be completed and returned to the school admissions team prior to **1 February 2025** in order that this priority may be awarded on time for the routine admissions round. Any applications received later than this date will be awarded the priority after national offer day.

### Tiebreaker

If a school does not have enough places for all children in a particular category, places will be allocated to those living nearest the school. The distance is measured in miles as a straight line between the Ordnance Survey data point for the child's home address and the school using Reading Borough Council digital mapping software. This distance is measured to three decimal places. In the rare event that it is not possible to decide between the applications of those pupils who have the same distance measurement, the place will be offered using random allocation. A member of Committee Services staff for Reading Borough Council will supervise the selection process.

**Please ensure you read the Reading Borough Council full admission policy; this can be obtained from our website here: <https://brighterfuturesforchildren.org/for-parents-carers/schools/admissions-arrangements/>**

## Useful numbers and contact details

<b>School Admissions Team</b>	<b>0118 937 3777 (option 1)</b> <a href="mailto:admissions@brighterfuturesforchildren.org">admissions@brighterfuturesforchildren.org</a>
<b>Reading Family Information Centre</b>	<b>0118 937 3777 (option 2)</b> <a href="mailto:fis@reading.gov.uk">fis@reading.gov.uk</a>
<b>Education/Complaints Helpline</b>	<b>0118 937 3787</b> <a href="mailto:Socialcare.Complaints@reading.gov.uk">Socialcare.Complaints@reading.gov.uk</a>
<b>Special Educational Needs Helpline</b>	<b>0118 937 2674</b> <a href="mailto:sen@brighterfuturesforchildren.org">sen@brighterfuturesforchildren.org</a>
<b>School Transport Service</b>	<b>0118 937 2542</b> <a href="mailto:School.transport@brighterfuturesforchildren.org">School.transport@brighterfuturesforchildren.org</a>
<b>Reading Information, Advice &amp; Support Service for SEND</b>	<b>0118 937 3242</b> <a href="mailto:iass@reading.org.uk">iass@reading.org.uk</a>

## Other Local Authorities

<b>Local authority</b>	
Bracknell Forest Borough Council	01344 354 023 <a href="mailto:School.admissions@bracknell-forest.gov.uk">School.admissions@bracknell-forest.gov.uk</a>
Buckinghamshire County Council	01296 395 000 <a href="mailto:admissions@buckscc.gov.uk">admissions@buckscc.gov.uk</a>
Hampshire County Council	0300 555 1377 <a href="mailto:Admissions.team@hants.gov.uk">Admissions.team@hants.gov.uk</a>
Oxfordshire County Council (South Division)	0345 241 2487 <a href="mailto:Admissions.school@oxfordshire.gov.uk">Admissions.school@oxfordshire.gov.uk</a>
Royal Borough of Windsor & Maidenhead Council	01628 683800 <a href="mailto:Rbwm.admissions@achievingforchildren.org.uk">Rbwm.admissions@achievingforchildren.org.uk</a>
Slough Borough Council	01753 875728 <a href="mailto:admissionshelpline@slough.gov.uk">admissionshelpline@slough.gov.uk</a>
West Berkshire Council	01635 551111 <a href="mailto:admissions@westberks.gov.uk">admissions@westberks.gov.uk</a>
Wokingham Borough Council	0118 974 6000 <a href="mailto:admissions@wokingham.gov.uk">admissions@wokingham.gov.uk</a>

## Other Useful Telephone Numbers

Independent Schools Council (ISC)	020 7766 7070
Local Government Ombudsman – Advice Line	0300 061 0614

## Useful Websites

Brighter Futures for Children	<a href="https://brighterfuturesforchildren.org/">https://brighterfuturesforchildren.org/</a> Schools' information is under the <a href="#">parent/carers section &gt; schools</a>
Reading Borough Council	<a href="http://www.reading.gov.uk">www.reading.gov.uk</a>
DfE (Department for Education)	<a href="https://www.gov.uk/government/organisations/department-for-education">https://www.gov.uk/government/organisations/department-for-education</a>
Ofsted (The Office for Standards in Education)	<a href="https://www.gov.uk/government/organisations/ofsted">https://www.gov.uk/government/organisations/ofsted</a>
Qualifications and Curriculum Authority	<a href="http://www.qca.org.uk">www.qca.org.uk</a>
National Curriculum Information	<a href="http://www.gov.uk/national-curriculum/overview">www.gov.uk/national-curriculum/overview</a>
GOV.UK	<a href="http://www.gov.uk">www.gov.uk</a>
ACE (Advisory Centre for Education)	<a href="http://www.ace-ed.org.uk">www.ace-ed.org.uk</a>

Every effort has been taken to ensure that the information in this guide is correct at the time of going to press, but some details may be subject to change.

School Admissions Team, Brighter Futures for Children, Civic Offices, Bridge Street, Reading, RG1 2LU

Tel: 0118 937 3777

Email: [admissions@brighterfuturesforchildren.org](mailto:admissions@brighterfuturesforchildren.org)



**Brighter  
Futures for  
Children**



School Admissions Team,  
Brighter Futures for Children  
Civic Offices,  
Bridge Street  
Reading  
RG1 2LU

[admissions@brighterfuturesforchildren.org](mailto:admissions@brighterfuturesforchildren.org)

0118 937 3777