



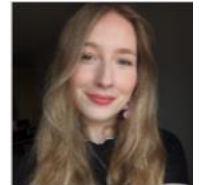
New Bridge Nursery School Newsletter Term 1



We hope you all had a wonderful summer and are excited to begin the new academic year together.

Staffing

We're delighted to introduce Becca, who has joined our team and will be based in Rainbow Class. Please join us in helping her feel at home in our school community.



Birthdays

We celebrate the children's birthdays in nursery. Please DO NOT send in a cake or sweets but we would welcome a fruit selection for the children to share.

Celebrations

Please remember to let us know of any festivals or other celebrations you have in your home, so that we can share these with the children.

Absences and Lateness



Please ensure that you bring your child to nursery on time each day. On the rare occasion you may be late, please call us to let us know. It is important that the children arrive on time as it impacts the whole group if the team needs to be interrupted to welcome a late child. With this in mind we will be leaving the doors open until 9.10am and 12.55pm. If you are late unfortunately you will need to bring your child to reception and you will need to wait with them until group time finishes (this may take up to 15 minutes).

School times are as follows:

9am - 12pm for mornings, 9am - 3.45pm for a full day and 12.45 - 3.45pm for afternoon sessions.

If Your Child Is Unwell or Will be Absent

If your child is unwell or not coming to nursery for any reason, please call the office or leave a message on the answer phone. We have a duty of care to follow up any absences on the first day so please do make this call.

Safeguarding Reminders

Please put your phones away before entering nursery. Can you also ensure that the gates are closed behind you. Thank you

Donations

We are very appreciative of your weekly fruit and monetary donations. £2 per week or £20 per term towards toys and materials for the children. So far this term **£73** has been posted into our pigs. Thank you so much!

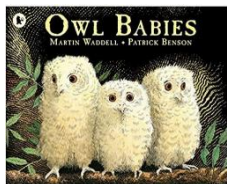


Garden Project

We are planning to raise funds to transform one of our nursery gardens. Our vision is to create two inspiring new spaces for the children: a forest school area to encourage outdoor learning and exploration, and an all-weather space with equipment to support the development of physical skills.

To bring this project to life, we would greatly value your support. If you are able to help with organising or running fundraising events, have experience with writing bids or applying for grants, or know of any businesses who might be interested in sponsorship, we'd love to hear from you. Please contact Jean hos@newbridgenursery.reading.sch.uk

Together, we can create exciting new spaces that will benefit our children for many years to come.



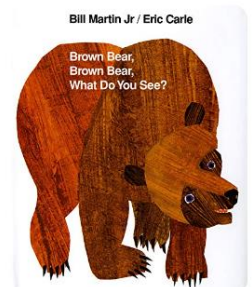
Focus Stories in Rainbow Class

Our focus stories for this term are "Owl Babies" by Martin Waddell and then later in the term, "We're Going on a Bear Hunt" by Michael Rosen



Focus Stories in Sunshine Class

Our focus stories for this term are: "Wow Said the Owl" by Tim Hopgood' and "Brown Bear Brown Bear, What Do You See?" by Eric Carle



What to bring to nursery - Please ensure all clothes and belongings are clearly NAMED in a rucksack or cloth bag. **NO CARRIER BAGS PLEASE**

- Water bottle - this will go home each day (please only fill with water)
- Wellington boots - to leave at nursery
- Waterproof jacket and trousers (or all in one) - to leave at nursery
- Sun hat - when needed
- Nappies and wipes (if applicable)
- Spare clothes - including underwear and socks

Please **DO NOT** put toys, food, medication, creams or any other items not listed above in your child's bag.

Please **DO NOT** send any plastic carrier bags into nursery. This is for safety and ecological reasons. Wet bags are an easy way to store wet/dirty clothes. They are a reusable, waterproof and leak resistant bag that zips shut to help keep odours (and liquids) from escaping.

Focus Children and Tapestry Observations

Each short term your child will become a focus child. You will be asked to complete a simple questionnaire and then return this back to the team member. At the end of each focus week, you will have a phone meeting to discuss the week and a summary observation uploaded to Tapestry. Please comment or click like to say you have seen this. We ask that you then add your own observation showing something you have done at home following the suggested next steps for home learning. After the focus week you will have a **10-minute** phone meeting with your key person to discuss your child's progress. By carrying out observations this way, it means that the team spend more time with the children and our observations are more focused on the children's learning and we get to meet with parents to discuss children's learning every 6 to 8 weeks.

Each child in Rainbow and Sunshine will have a short settling in summary approximately 2 weeks after joining us with a follow up telephone call. The focus weeks will begin the following short term. Children in Snowflake class will have individualised settling in periods.

Lunch Boxes (Children attending 30 hours)

Please Remember we are a **NUT FREE** School. Please note: We have a child and staff member with serious allergies to nuts.

We provide water for the children to have with their lunch. Please do not send in any other drinks including smoothies. We will send home any food that your child chooses not to eat or if there was too much for them to eat in 30 minutes. (It is not recommended that children sit for longer than this to eat a meal). We ask that you follow the healthy eating suggestions below and only send food that can be eaten cold as we are not able to reheat food. **Please ensure you cut grapes, sausages etc. length ways.** Thank you



Jean - Head of School



Please find the diary dates below. These may be subject to change.

Diary Dates for the autumn term.

Day	Date	
Week Beg:	22 nd Sept	Collections for Harvest Festival throughout the week for Rainbow
Sunday	28 th Sept-2 nd Oct	Durga Puja - Hindu Festival
	Oct	Black History Month
Friday	2 nd Oct	Celebration of Durga Puja - in nursery
Monday	6 th Oct	Mid-Autumn Festival (moon festival)
Tuesday	7 th Oct	Rainbow's Harvest Festival Singing - Parents are invited 11.30am and 2.30pm
Tuesday	7 th Oct	Parent Workshop - Toilet Training more details to follow
Friday	10 th Oct	World Mental Health Day
Saturday	11 th Oct	Open Morning for new registrations 9.30 -10.30 please share with those looking for a nursery place.
Monday	20 th Oct	Diwali
Wednesday	22 nd Oct	Celebration of Republic Day of Türkiye
Thursday	29 th Oct	Republic Day of Türkiye
Nursery Closed 27th October -31st October for HALF TERM		
Monday	3 rd Nov	Inset Day - Nursery Closed to all children for Inset (first aid)
Tuesday	4 th Nov	Nursery re opens for Term 2
Wednesday	5 th Nov	Guy Fawkes
Tuesday	11 th Nov	Remembrance Day - we will be honouring this at 11am
Thursday	13 th Nov	Mark Making and Early Writing Parent Workshop 11.30pm & (2.30pm online- NB and Cav parents)
Sunday	16 th Nov	Artisa Christmas Market - Please pop along to support us.
Week Beg:	17 th Nov	School Application Information will be sent out this week TBC
Friday	21 st Nov	Children in Need
Tuesday	25 th Nov	School Application Information and Support Session - Claire TBC
Thursday	27 th Nov	USA - Thanksgiving
Sunday	30 th Nov	St. Andrew's Day - Patron Saint of Scotland (celebrate Friday 28 th)
Thursday	4 th Dec	Feathers and Fur am
Friday	5 th Dec	Feathers and Fur pm
Tuesday	9 th Dec	Supporting Positive Behaviour Workshop - With Claire
Thursday	11 th Dec	Save the Children - Christmas Jumper Day
Tuesday	16 th Dec	Christmas singalong with Sunshine Families 11.30am families and 3.15pm 30 hours and pm families
Tuesday	16 th Dec	Christmas singing for Rainbow families 11.30am and 2.30pm
Wednesday	17 th Dec	Visit to St John's Church TBC
Thursday	18 th Dec	Snowflake Christmas session
Thursday	18 th Dec	Last usual sessions for all children
Friday	19 th Dec	Christmas Parties - Rainbow & Sunshine children 11am- 12.30pm
Monday	22 nd Dec	Christmas Break - CLOSED

CHRISTMAS BREAK Monday 22nd Dec - Friday 2nd January